



Simulation Summary Report

Project Title: Plate with three holes

Description: 3D, Stress Analysis, Isotropic, Quasi-Static

Created By: pmasscasestudies

Project Created: 04/09/2023-19:27

Report Created: 10/31/2023-10:29

Analysis Type: Stress Analysis

Solver: quasi-static

Dimension: 3

```
{ "project_name": "Plate with three holes", "dateTime": { "month": "04", "hour": "19", "year": "2023", "day": "09", "minute": "27" }, "feModels": [], "materials": [ { "density": 1e-05, "elastic_properties": { "E": 68000, "G": 25000, "nu": 0.36 }, "name": "mat1", "failure_parameters": { "Scr": 0, "Xc": 0, "type": "Critical-Stretch", "Eccr": 0, "ft": 0, "S23": 0, "Stcr": 0, "w0": 0, "Xt": 0, "s0": 1, "Etr": 0, "ef": 0, "c": 0, "Yc": 0, "D1": 0, "D2": 0, "D3": 0, "D4": 0, "phi": 0, "D5": 0, "Ecr": 0, "S12": 0, "Scrr": 0, "Yt": 0, "fc": 0 }, "behavior": "elastic", "type": "isotropic", "dimension": 3 }, { "analysis": { "quasi_static": { "max_iteration": 1000, "tolerance": 1e-07, "precondition": 1e-10, "load_segments": [ { "name": "ls1", "type": "quasi-static", "num_save": 1, "ratio_segment": 1, "num_segment": 1 }, { "iteration_damage": "false", "max_bond_breakage": 6, "zero_energy": { "type": "bond-associated", "bond_associated_family": 1 }, "name": "analysis1", "type": "Stress Analysis", "dimension": 3, "inclusion_damage": "true", "solver": "quasi-static", "time_increment": 1e-08, "plotSetting": { "markerSize": "5", "markerOpacity": "1", "cameraEye": { "x": "1", "y": "1", "z": "1" }, "edgeColor": "#707070", "edgeWidth": "0.1", "markerColor": "#000000", "colorscale": "RdBu", "materialColor": "#000000", "lineColor": "#000000", "damageColor": "#000000", "aspectRatio": { "x": "1", "y": "1", "z": "1" }, "lineWidth": "1", "owner": "pmasscasestudies", "models": [ { "output_zones": [], "random_solids": [], "solids": [ { "name": "part1", "geometry": { "length": [120, 12, 300], "center": [60, 6, 150], "name": "geo1", "roll": 0, "pitch": 0, "type": "cuboid", "yaw": 0 }, { "material": { "name": "mat1", "roll": 0, "pitch": 0, "type": "constant", "yaw": 0 }, "dimension": 3, "grid": { "grid_type": "quadrilateral3D", "dx": 1.5, "dy": 1.5, "dz": 1.5, "roll": 0, "horizon_type": "sphere", "hr": 4.6, "pitch": 0, "yaw": 0 } } ], "failure_zones": [ { "name": "model1", "boundary_zones": [ { "name": "bc1", "geometry": { "length": [12, 12, 10], "center": [60, 6, 0], "name": "geo1", "roll": 0, "pitch": 0, "type": "cuboid", "yaw": 0 }, { "dimension": 3, "properties": { "type": "displacement", "value": 0, "direction": "X" } }, { "name": "bc2", "geometry": { "length": [12, 12, 10], "center": [60, 6, 0], "name": "geo1", "roll": 0, "pitch": 0, "type": "cuboid", "yaw": 0 }, { "dimension": 3, "properties": { "type": "displacement", "value": 0, "direction": "Y" } }, { "name": "bc3", "geometry": { "length": [120, 12, 10], "center": [60, 6, 0], "name": "geo1", "roll": 0, "pitch": 0, "type": "cuboid", "yaw": 0 }, { "dimension": 3, "properties": { "type": "displacement", "value": -3, "direction": "Z" } }, { "name": "bc4", "geometry": { "length": [120, 12, 10], "center": [60, 6, 300], "name": "geo1", "roll": 0, "pitch": 0, "type": "cuboid", "yaw": 0 }, { "dimension": 3, "properties": { "type": "displacement", "value": 3, "direction": "Z" } } ], "cracks": [], "laminate_solids": [], "dimension": 3, "voids": [ { "name": "void1", "dimension": 3, "geometry": { "r": 30, "center": [60, 6, 150], "name": "geo1", "roll": 90, "pitch": 0, "type": "cylinder", "yaw": 0, "height": 20 }, { "name": "void2", "dimension": 3, "geometry": { "r": 15, "center": [60, 6, 60], "name": "geo1", "roll": 90, "pitch": 0, "type": "cylinder", "yaw": 0, "height": 20 }, { "name": "void3", "dimension": 3, "geometry": { "r": 15, "center": [60, 6, 240], "name": "geo1", "roll": 90, "pitch": 0, "type": "cylinder", "yaw": 0, "height": 20 } } ], "inclusions": [] }, { "project_id": "027be2b1-92be-4991-ae53-dca7a1662403", "description": "3D, Stress Analysis, Isotropic, Quasi-Static" }
```

Undeformed Grid

Number of Points: 112832

min-x: 0.75

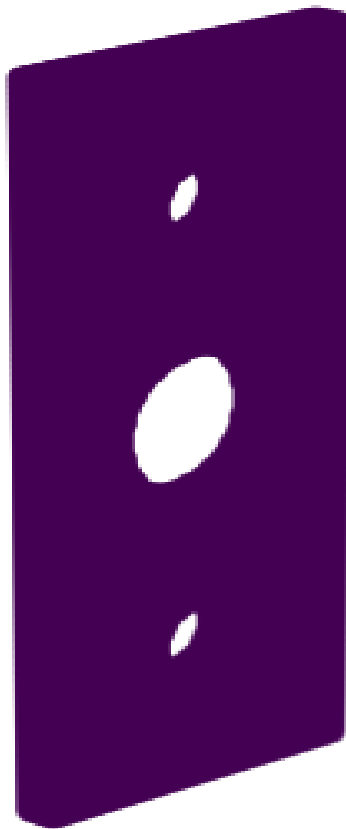
max-x: 119.25

min-y: 0.75

max-y: 11.25

min-z: 0.75

max-z: 299.25



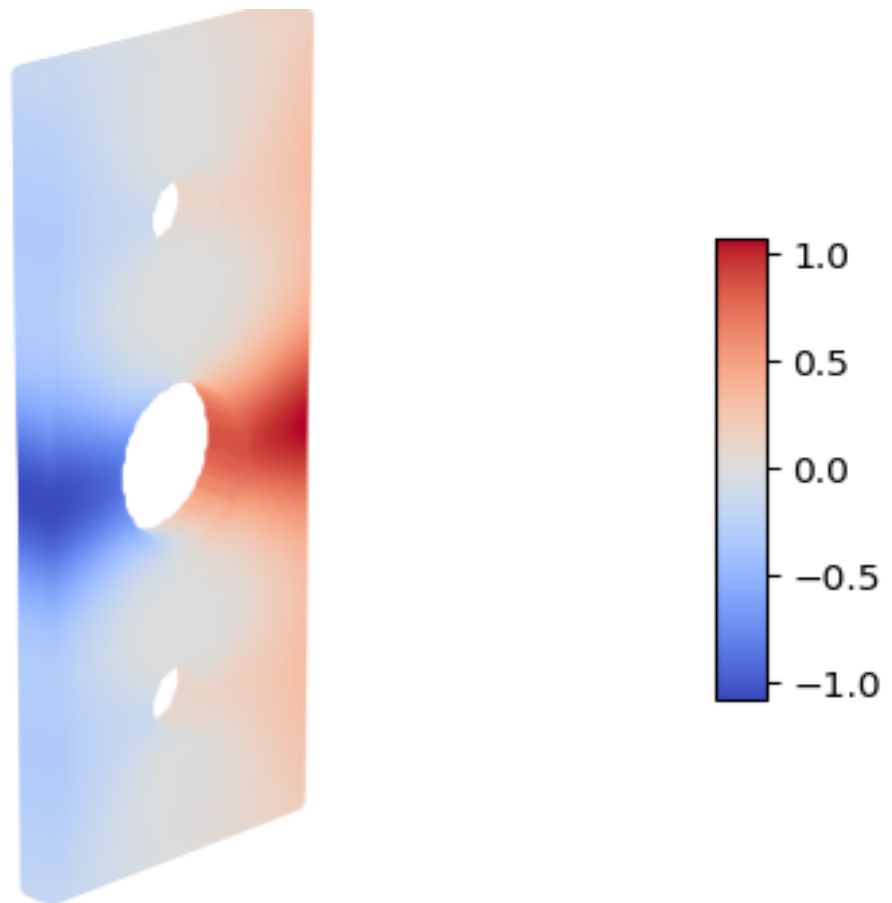
Run Name: run0

Solution Output: out_0_0

Field: u-x

min-u-x: -1.07404

max-u-x: 1.07404



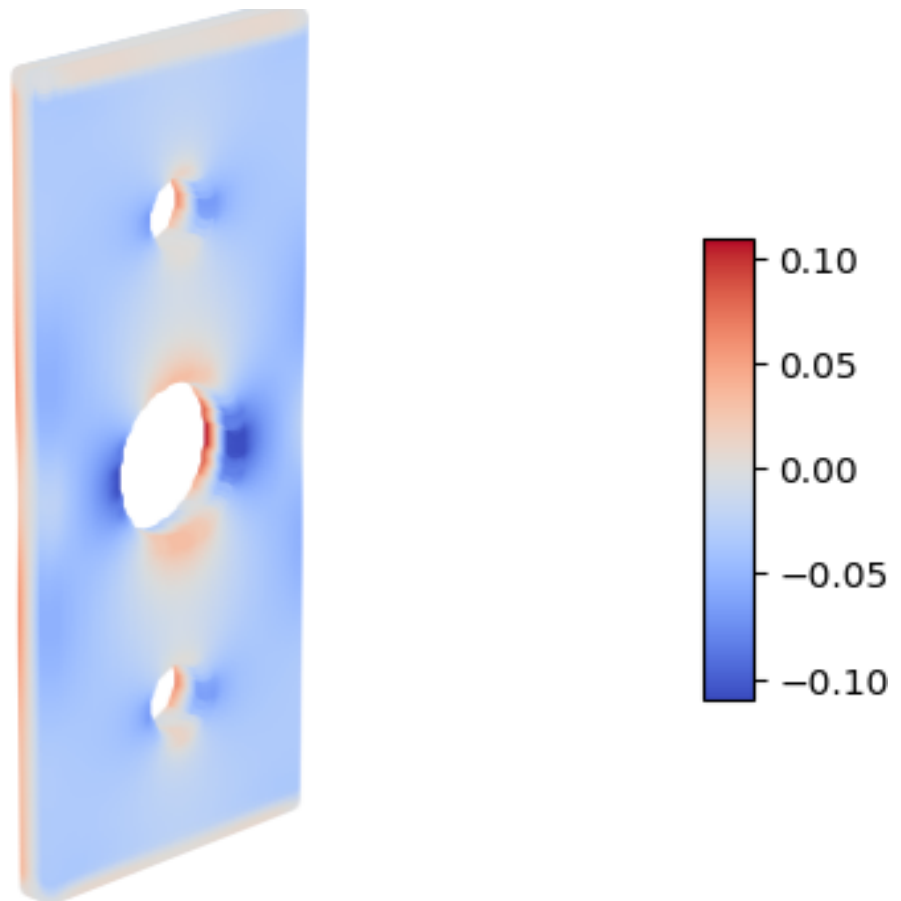
Run Name: run0

Solution Output: out_0_0

Field: u-y

min-u-y: -0.109535

max-u-y: 0.109535



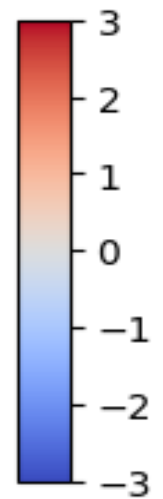
Run Name: run0

Solution Output: out_0_0

Field: u-z

min-u-z: -3.0

max-u-z: 3.0



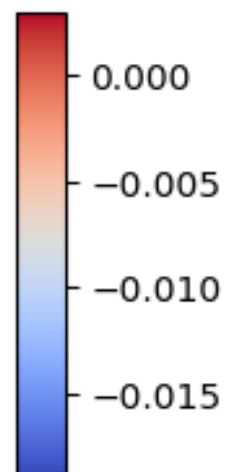
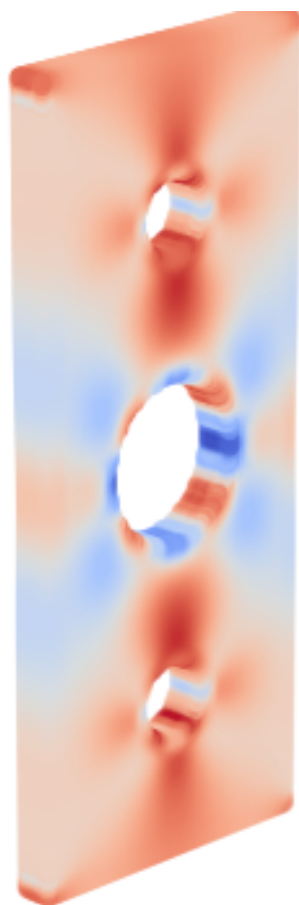
Run Name: run0

Solution Output: out_0_0

Field: e-x

min-e-x: -0.0187258

max-e-x: 0.00293924



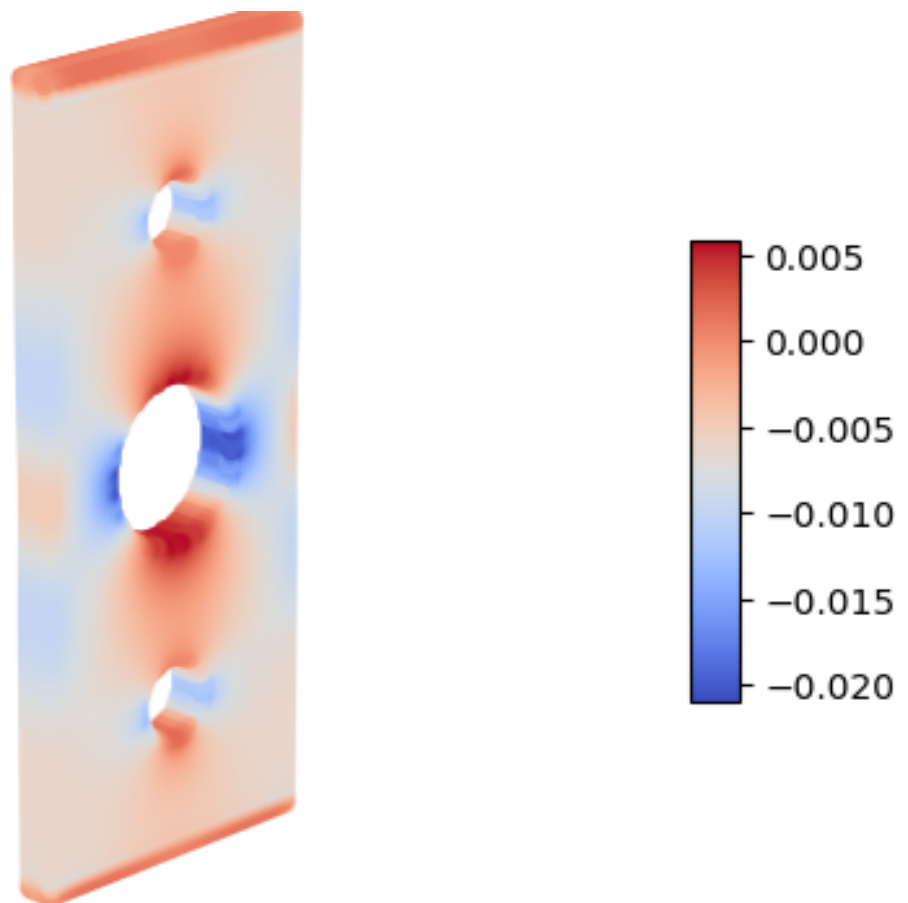
Run Name: run0

Solution Output: out_0_0

Field: e-y

min-e-y: -0.0209718

max-e-y: 0.00588864



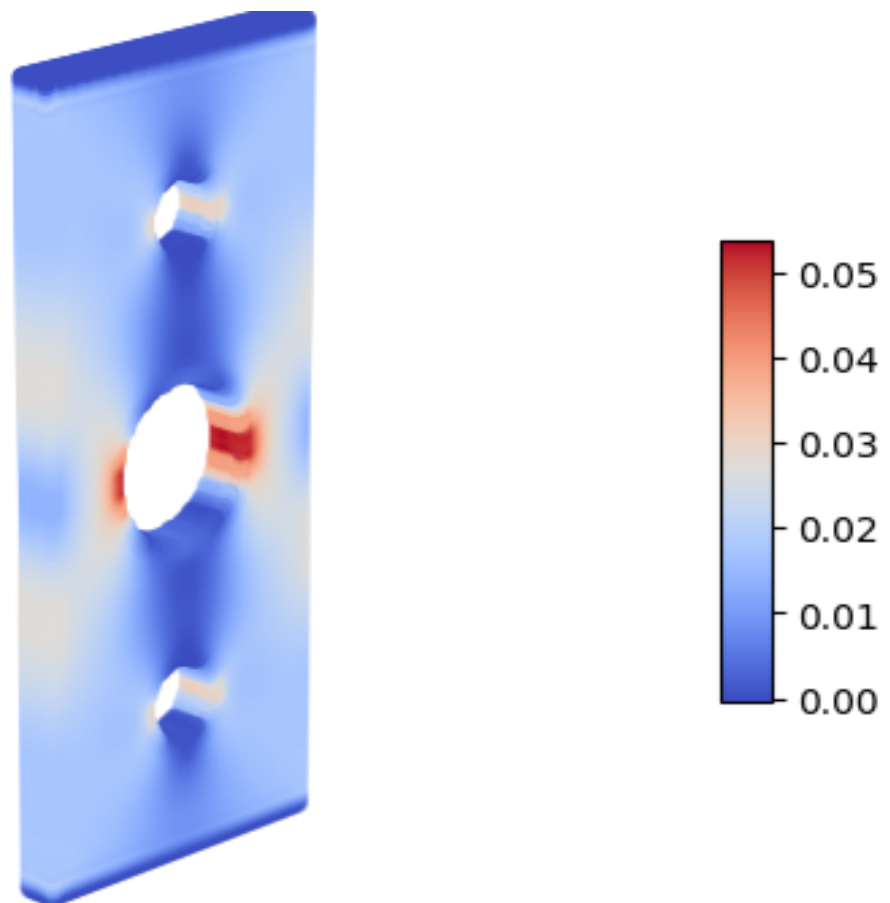
Run Name: run0

Solution Output: out_0_0

Field: e-z

min-e-z: -0.000315632

max-e-z: 0.0538504



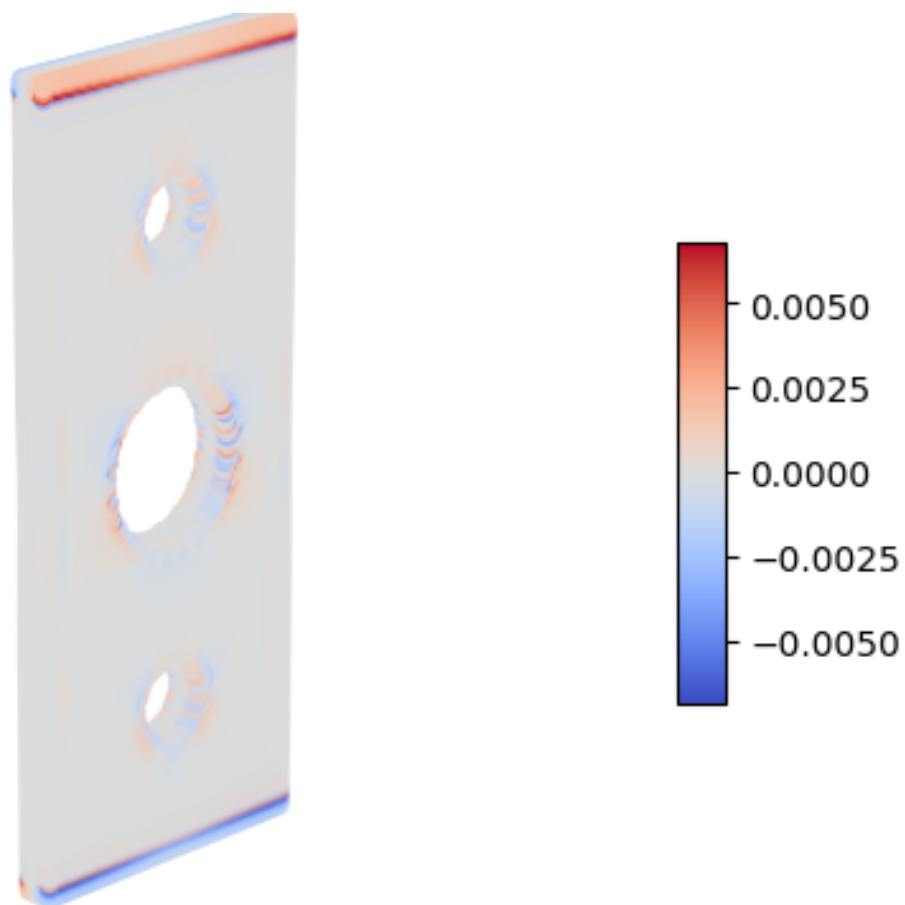
Run Name: run0

Solution Output: out_0_0

Field: e-xy

min-e-xy: -0.00681563

max-e-xy: 0.00681563



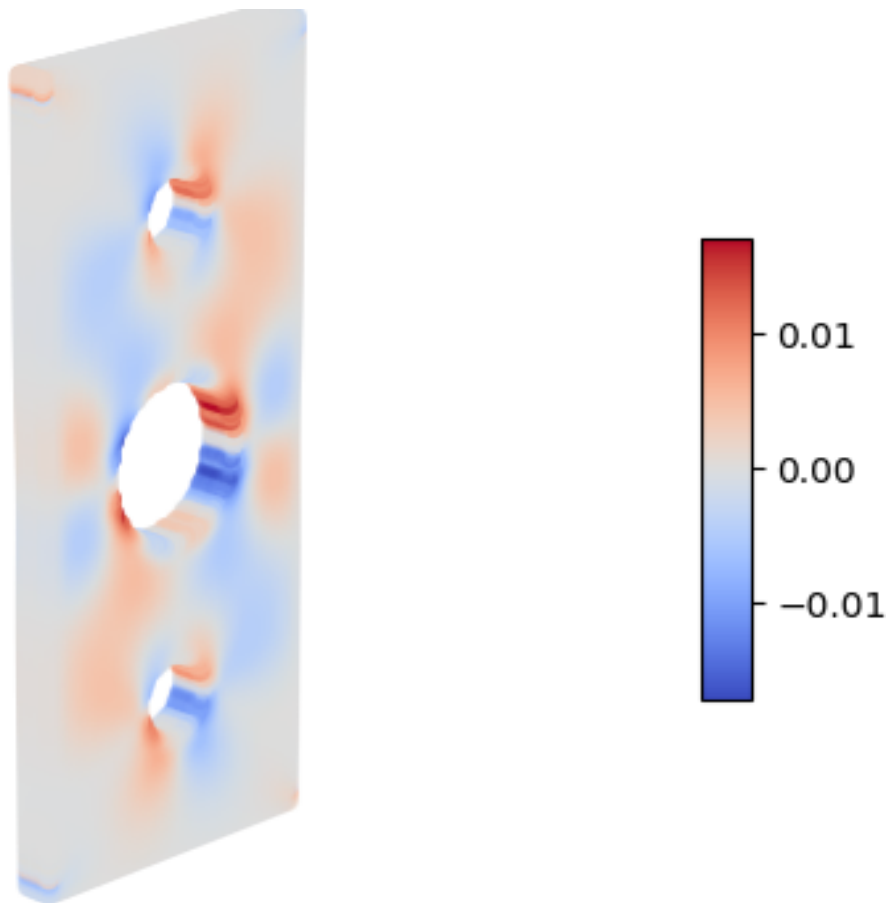
Run Name: run0

Solution Output: out_0_0

Field: e-yz

min-e-yz: -0.017161

max-e-yz: 0.017161



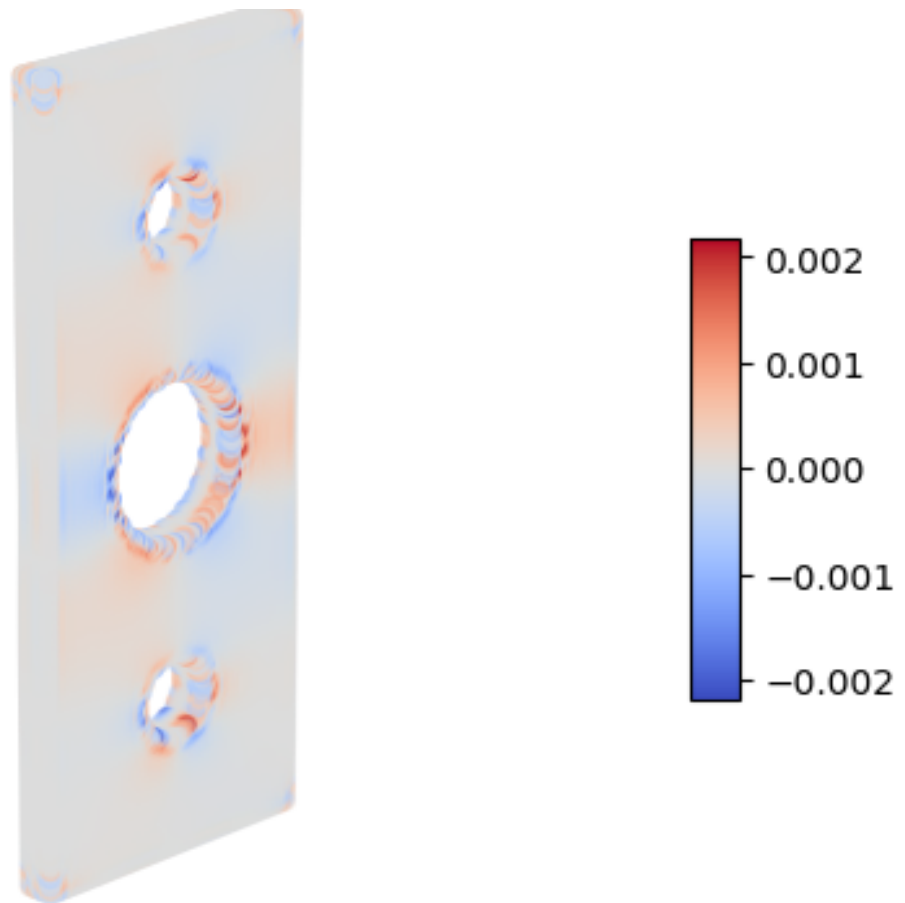
Run Name: run0

Solution Output: out_0_0

Field: e-zx

min-e-zx: -0.00218016

max-e-zx: 0.00218016



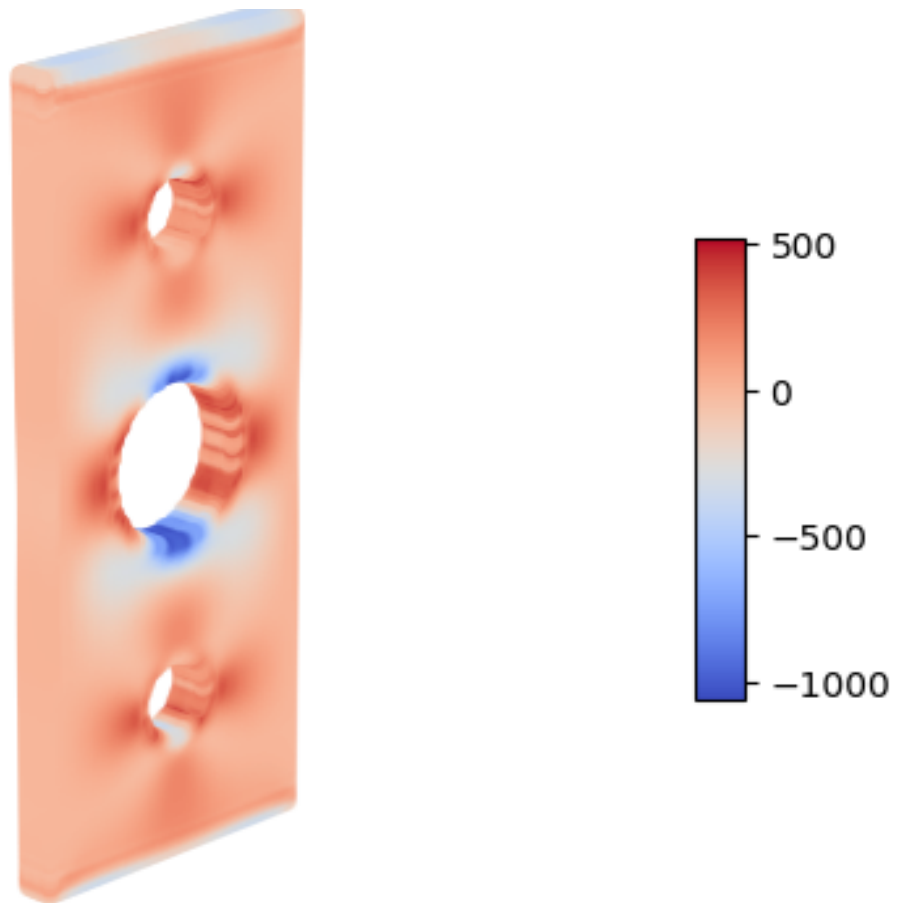
Run Name: run0

Solution Output: out_0_0

Field: s-x

min-s-x: -1054.9

max-s-x: 516.301



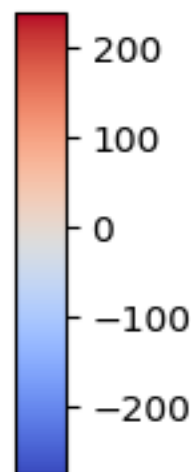
Run Name: run0

Solution Output: out_0_0

Field: s-y

min-s-y: -273.077

max-s-y: 240.097



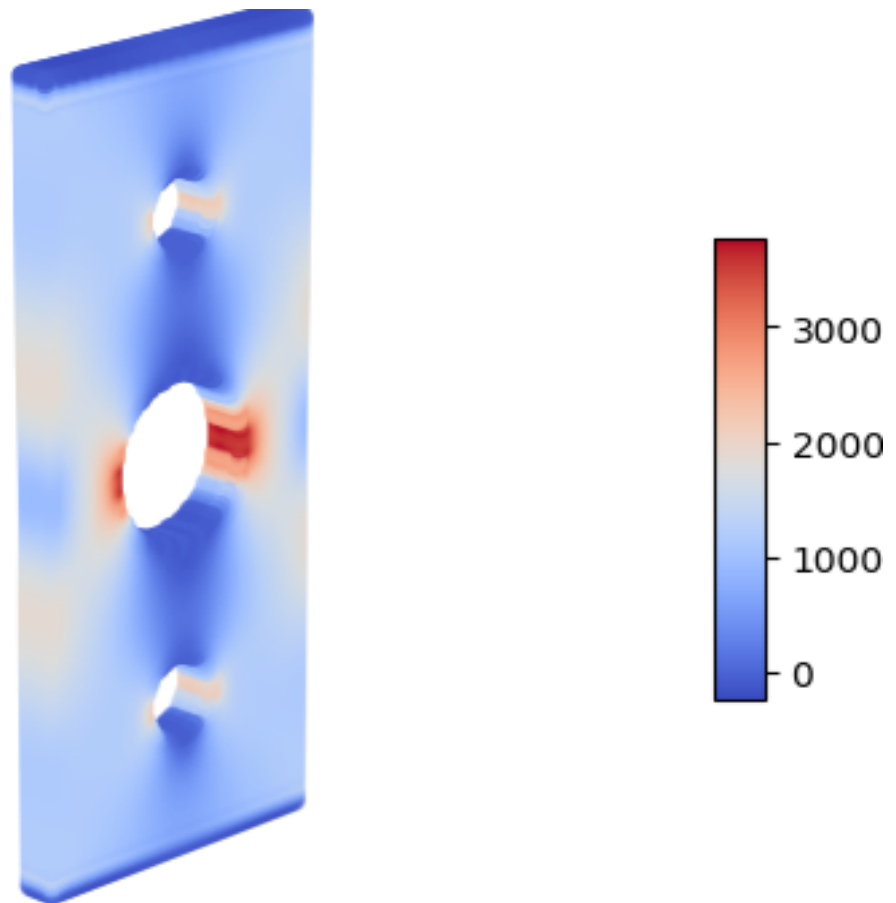
Run Name: run0

Solution Output: out_0_0

Field: s-z

min-s-z: -225.149

max-s-z: 3770.35



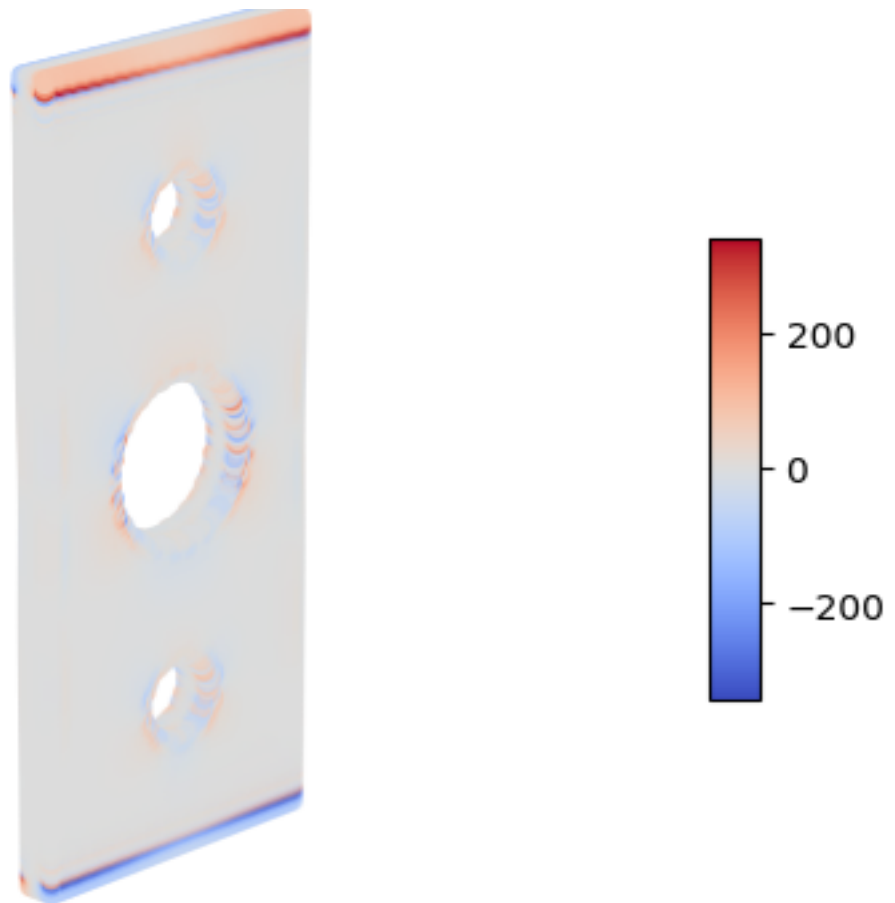
Run Name: run0

Solution Output: out_0_0

Field: s-xy

min-s-xy: -340.781

max-s-xy: 340.781



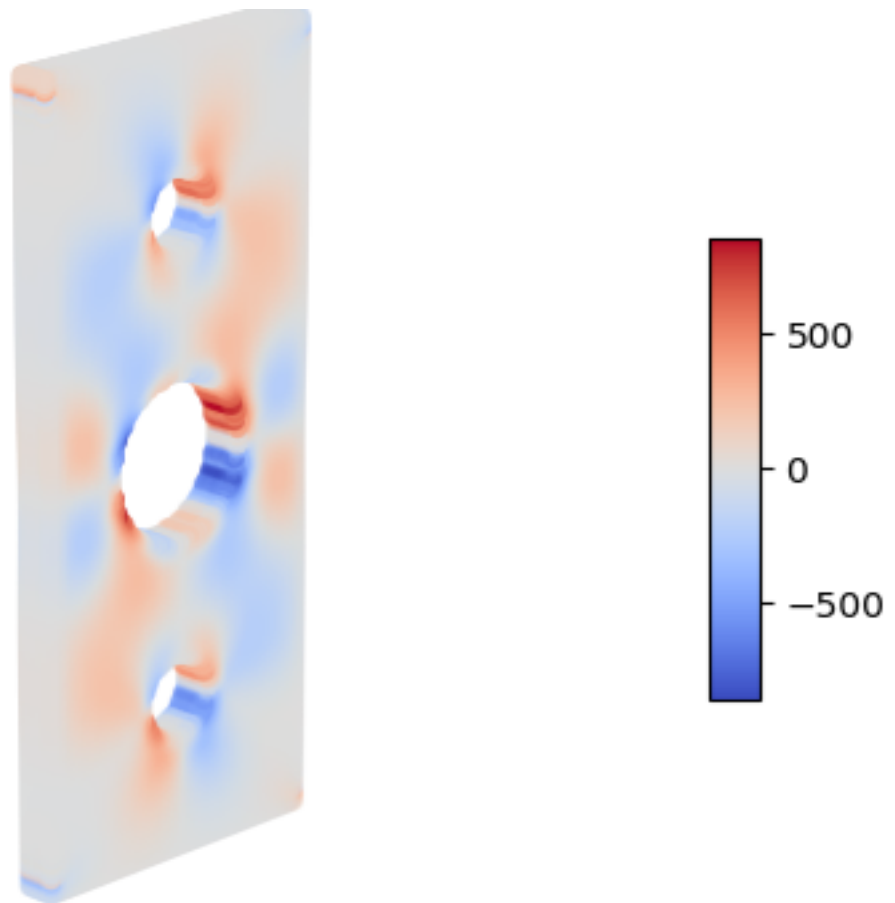
Run Name: run0

Solution Output: out_0_0

Field: s-yz

min-s-yz: -858.052

max-s-yz: 858.052



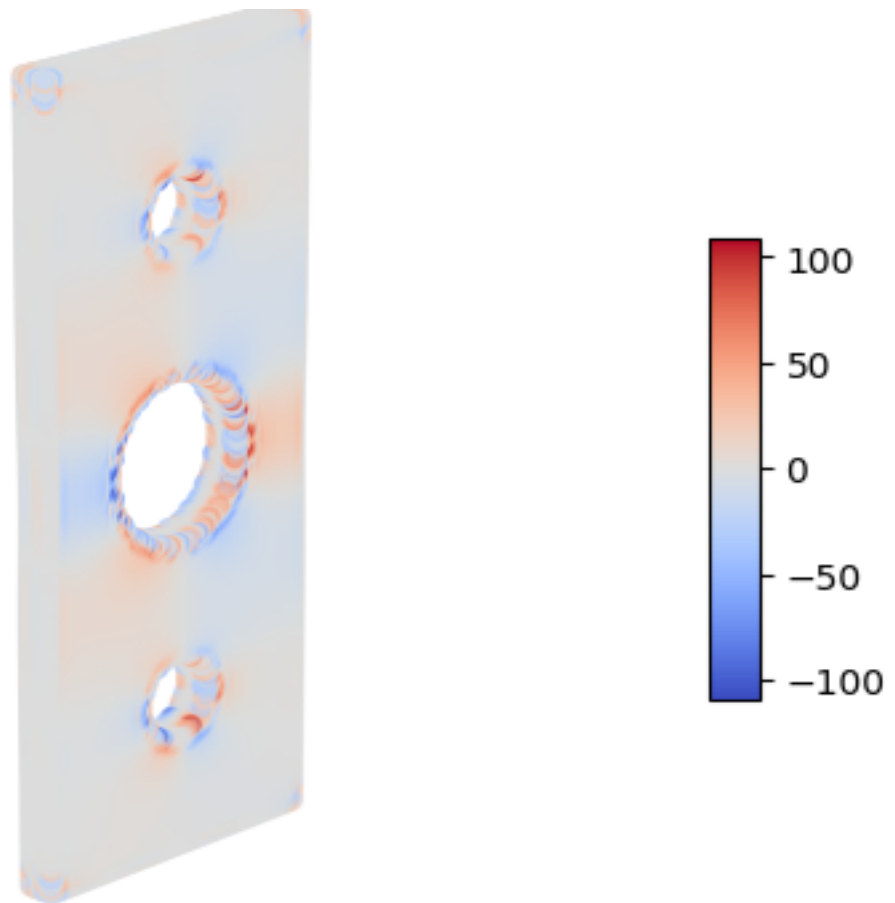
Run Name: run0

Solution Output: out_0_0

Field: s-zx

min-s-zx: -109.008

max-s-zx: 109.008



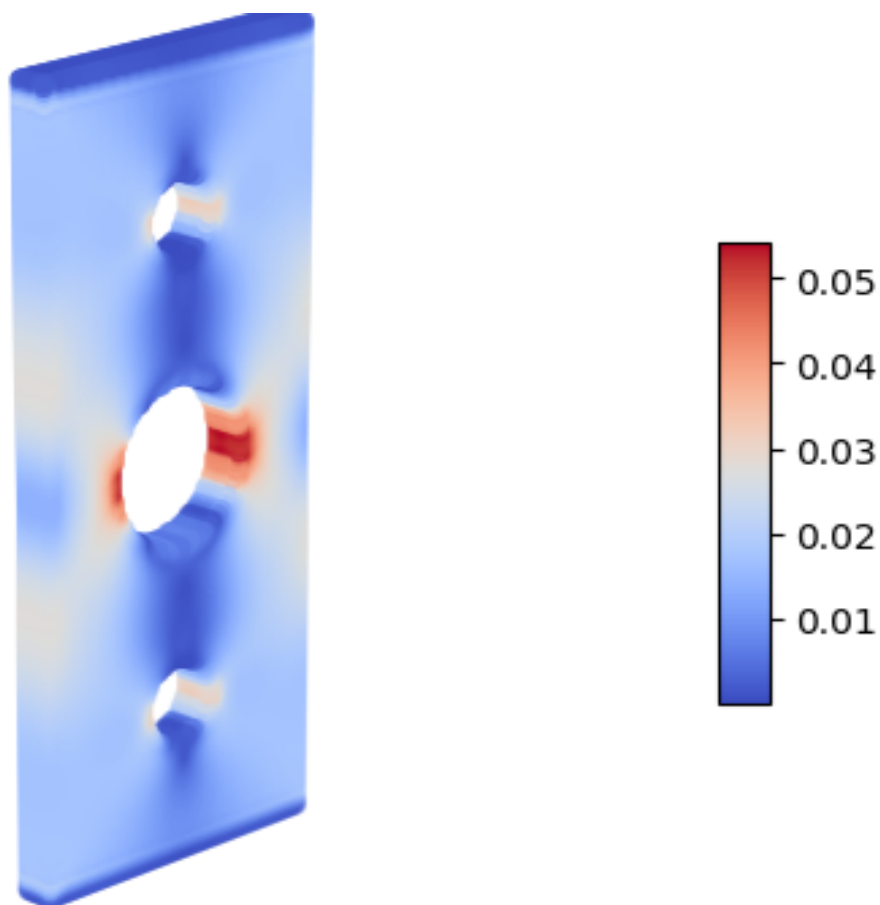
Run Name: run0

Solution Output: out_0_0

Field: e-p1

min-e-p1: 5.88052e-07

max-e-p1: 0.0543022



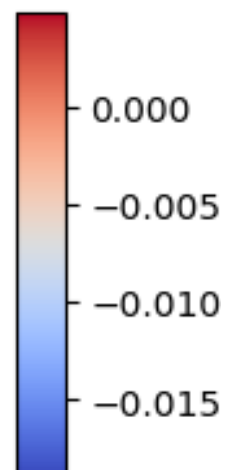
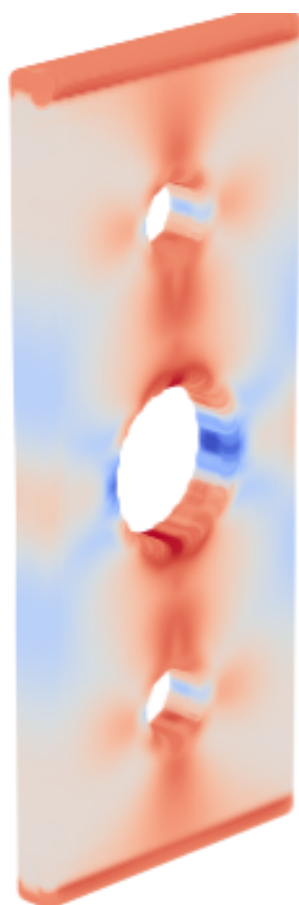
Run Name: run0

Solution Output: out_0_0

Field: e-p2

min-e-p2: -0.0187231

max-e-p2: 0.00484447



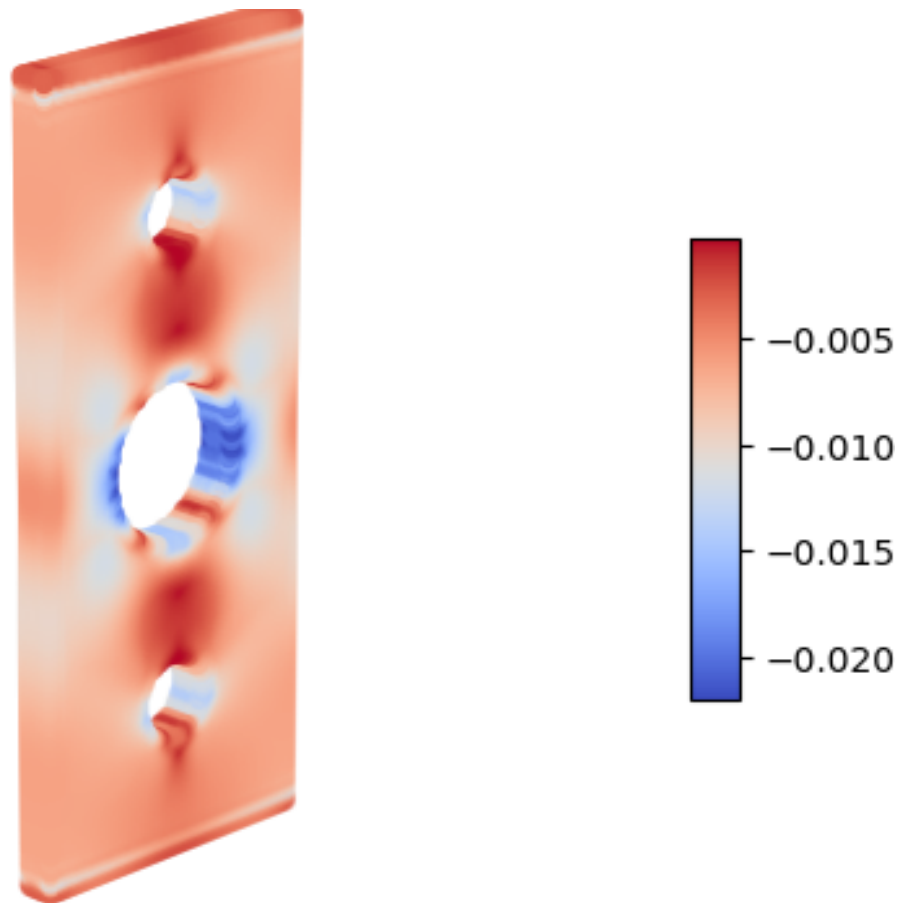
Run Name: run0

Solution Output: out_0_0

Field: e-p3

min-e-p3: -0.0219756

max-e-p3: -0.000242535



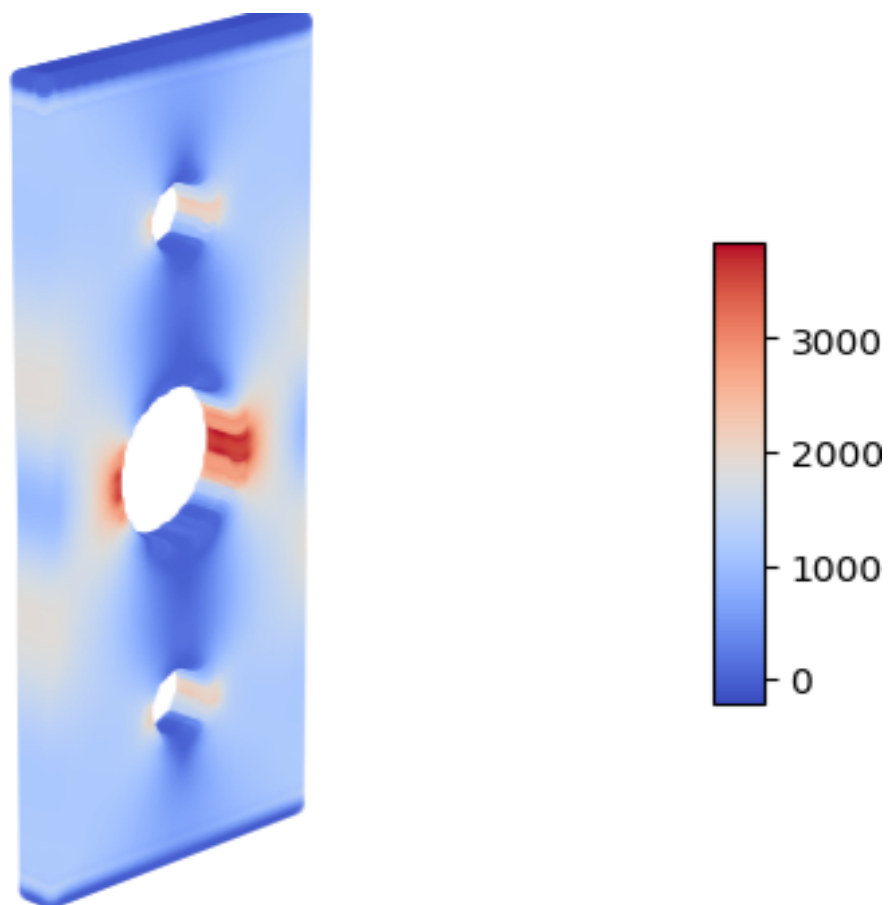
Run Name: run0

Solution Output: out_0_0

Field: s-p1

min-s-p1: -208.162

max-s-p1: 3847.91



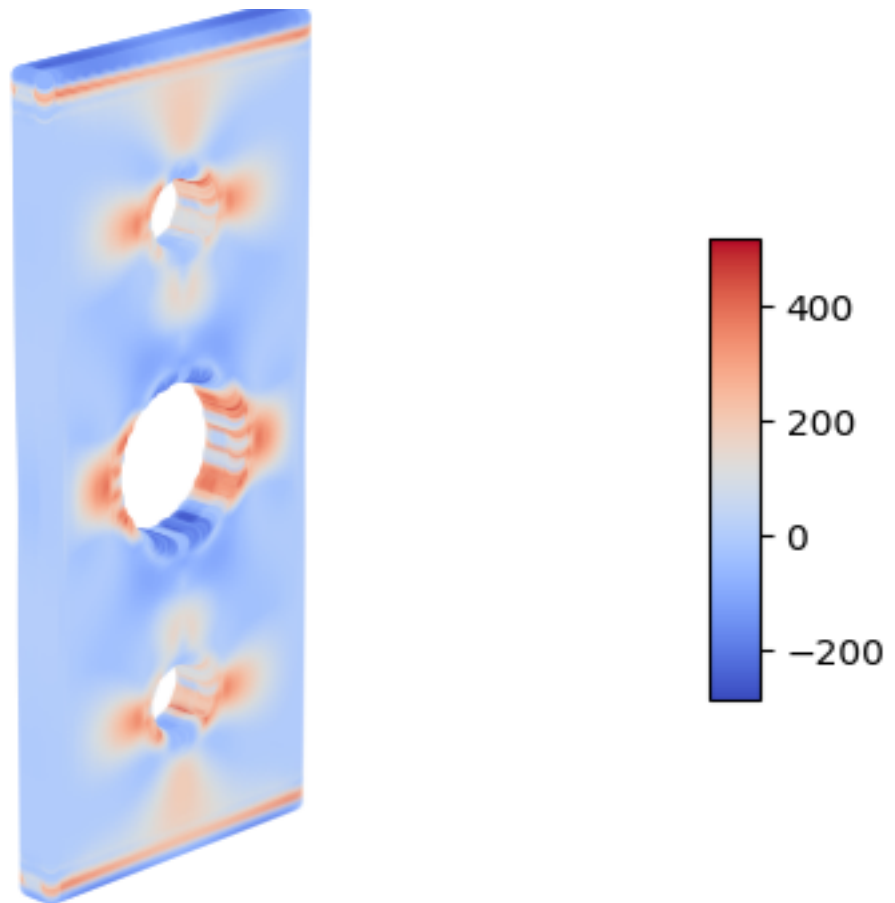
Run Name: run0

Solution Output: out_0_0

Field: s-p2

min-s-p2: -283.566

max-s-p2: 516.306



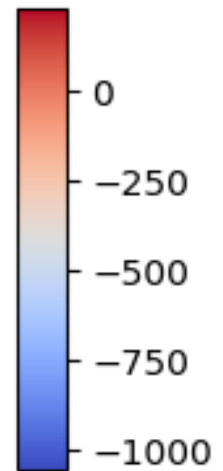
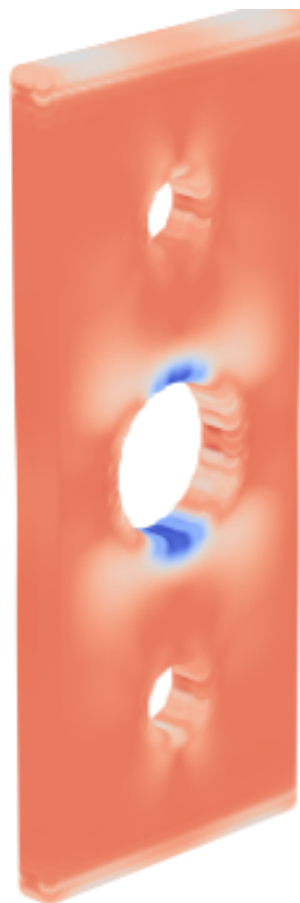
Run Name: run0

Solution Output: out_0_0

Field: s-p3

min-s-p3: -1054.9

max-s-p3: 227.363



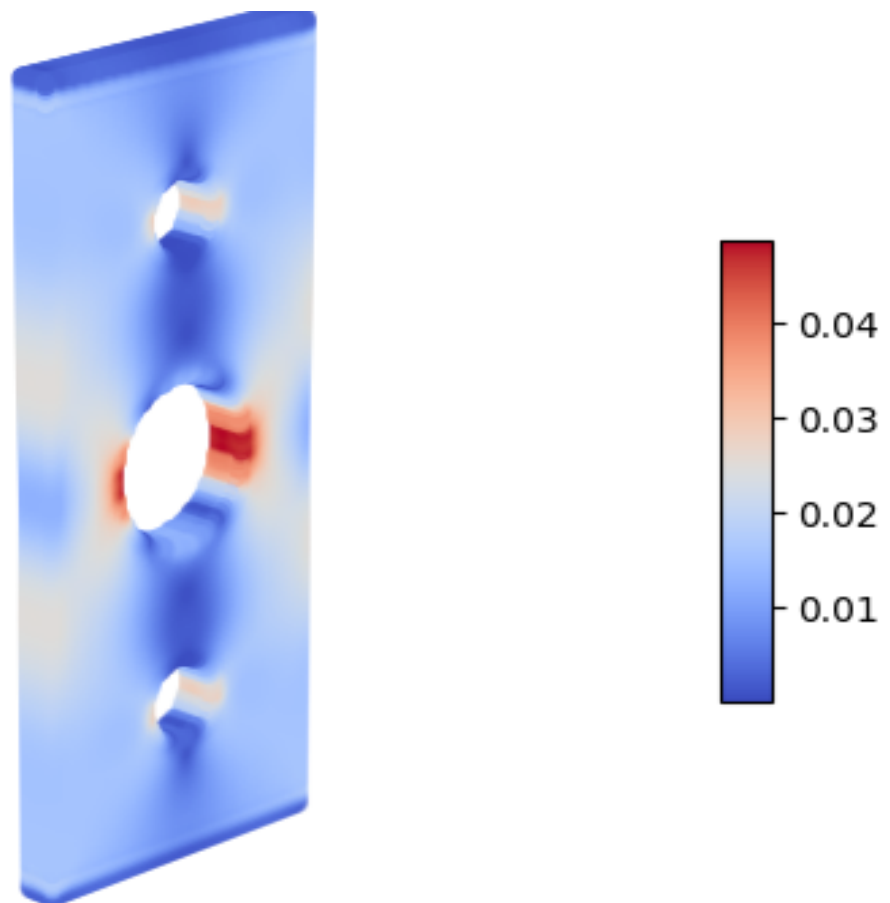
Run Name: run0

Solution Output: out_0_0

Field: e-eq

min-e-eq: 0.000181018

max-e-eq: 0.0487458



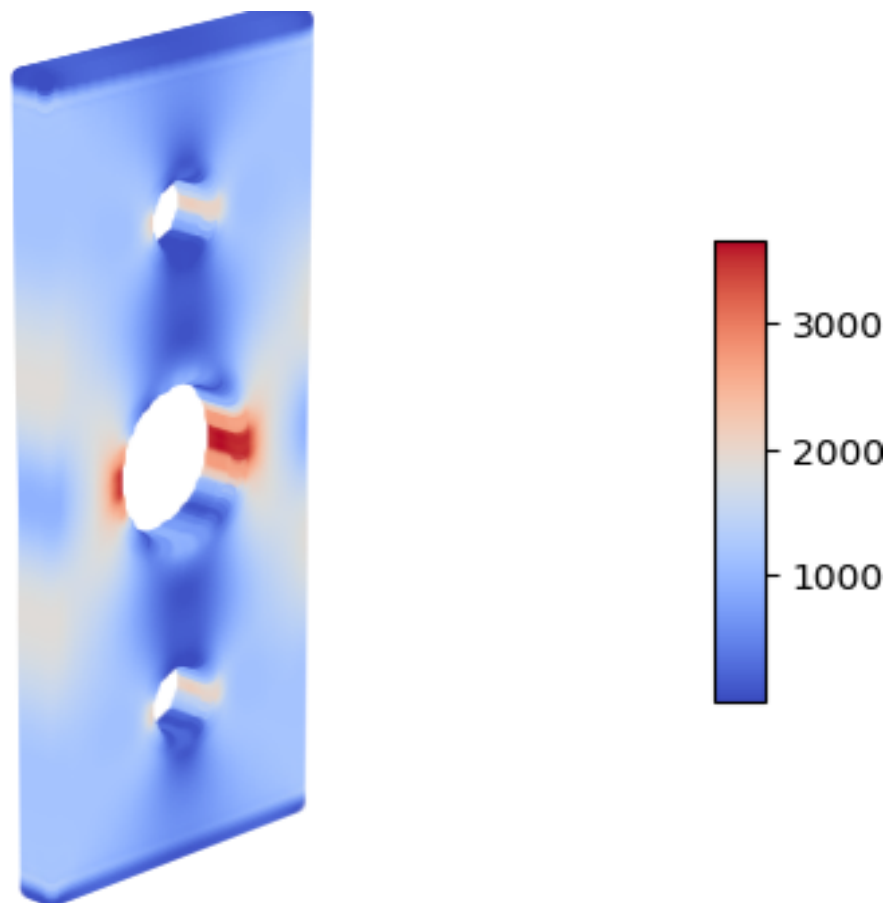
Run Name: run0

Solution Output: out_0_0

Field: s-eq

min-s-eq: 4.50931

max-s-eq: 3655.26



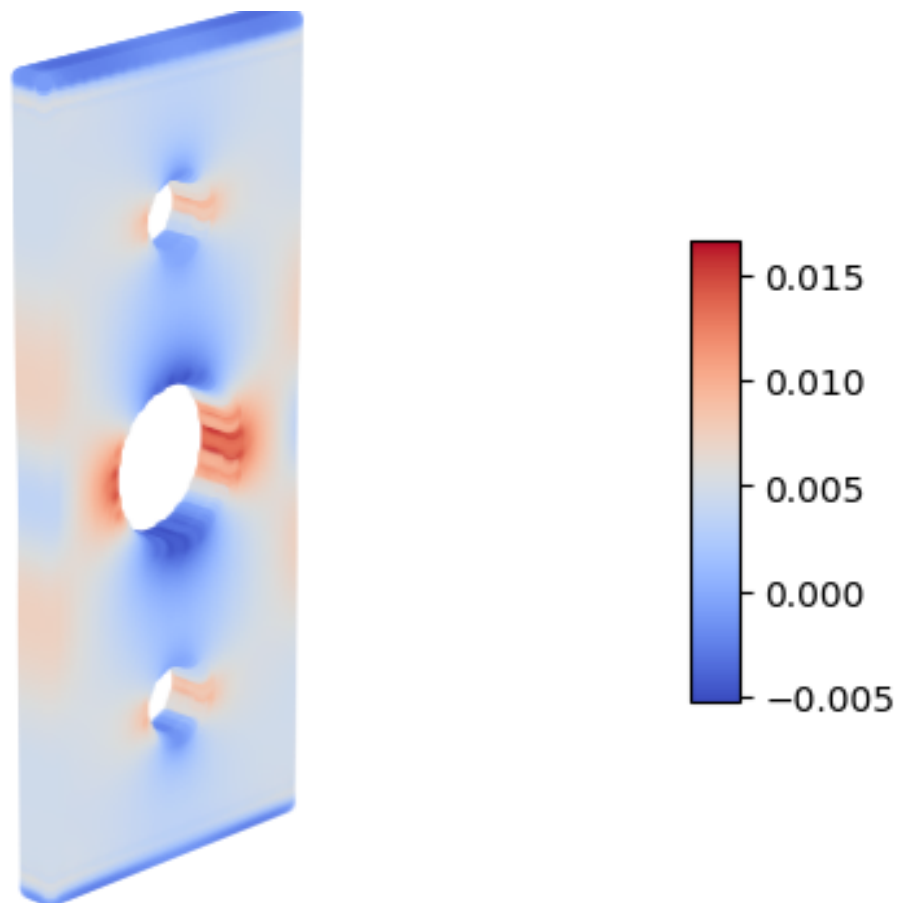
Run Name: run0

Solution Output: out_0_0

Field: e-vol

min-e-vol: -0.00518451

max-e-vol: 0.0166732



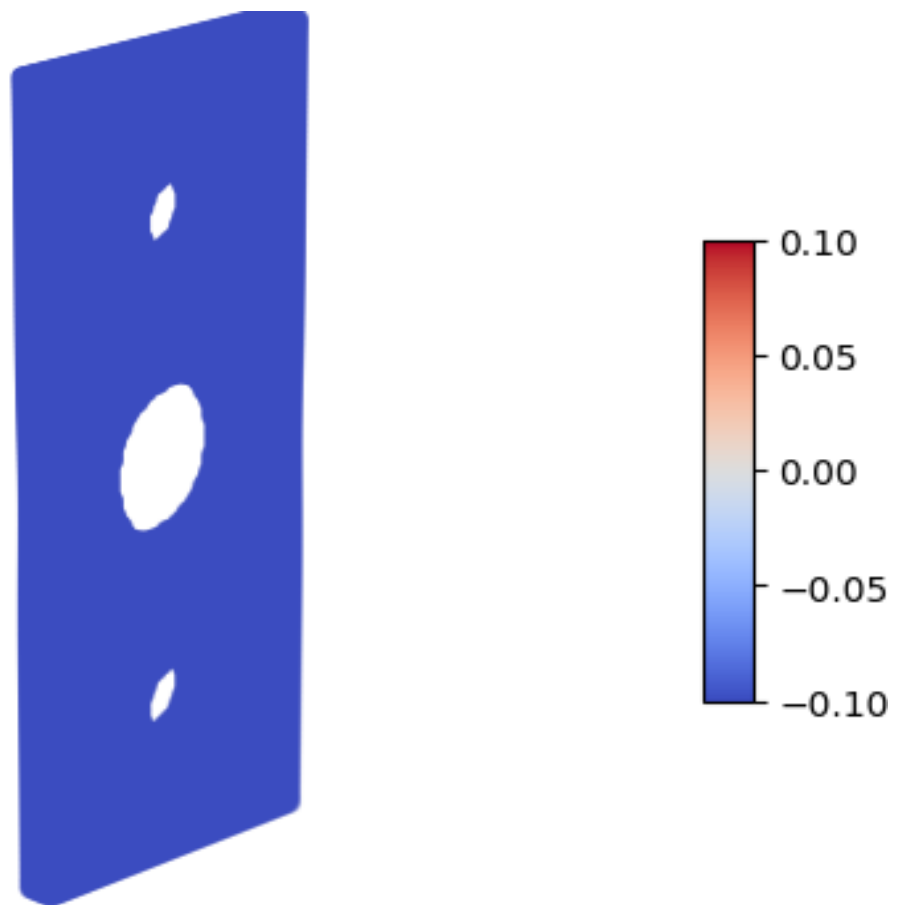
Run Name: run0

Solution Output: out_0_0

Field: damage-ini

min-damage-ini: 0.0

max-damage-ini: 0.0



Run Name: run0

Solution Output: out_0_0

Field: damage

min-damage: 0.0

max-damage: 0.0

