



Simulation Summary Report

Project Title: Plate with a hole

Description: Stress analysis, Isotropic, 2D

Created By: pmasscasestudies

Project Created: 01/03/2023-20:50

Report Created: 10/31/2023-10:17

Analysis Type: Stress Analysis

Solver: quasi-static

Dimension: 2

```
{ "project_name": "Plate with a hole", "dateTime": { "month": "01", "hour": "20",  
"year": "2023", "day": "03", "minute": "50"}, "feModels": [], "materials": [ { "de  
nsity": 1e-05, "elastic_properties": { "E": 72000, "G": 27692, "nu": 0.3}, "name"  
: "mat1", "failure_parameters": { "Scr": 0, "Xc": 0, "type": "Critical-Stretch",  
"Eccr": 0, "ft": 0, "S23": 0, "Stcr": 0, "w0": 0, "Xt": 0, "s0": 1, "Etr": 0, "  
ef": 0, "c": 0, "Yc": 0, "D1": 0, "D2": 0, "D3": 0, "D4": 0, "phi": 0, "D5": 0,  
"Ecr": 0, "S12": 0, "Scrr": 0, "Yt": 0, "fc": 0}, "behavior": "elastic", "type":  
"isotropic", "dimension": 2}], "analysis": { "quasi_static": { "max_iteration": 1  
000, "tolerance": 1e-07, "precondition": 1e-10}, "load_segments": [ { "name": "ls1  
", "type": "quasi-static", "num_save": 1, "ratio_segment": 1, "num_segment": 1} ]  
, "iteration_damage": "false", "max_bond_breakage": 8, "thickness": 1, "zero_ene  
rgy": { "type": "bond-associated", "bond_associated_family": 1.5}, "name": "analy  
sis1", "type": "Stress Analysis", "dimension": 2, "inclusion_damage": "true", "s  
olver": "quasi-static", "time_increment": 1e-08}, "plotSetting": { "markerSize":  
"2", "markerOpacity": "1", "cameraEye": { "x": "1.8", "y": "1.8", "z": "1.8"}, "e  
dgeColor": "middlegray", "edgeWidth": "0", "markerColor": "mutedblue", "colorsca  
le": "RdBu", "materialColor": "blue", "lineColor": "black", "damageColor": "red"  
, "aspectRatio": { "x": "1.8", "y": "1.8", "z": "1.8"}, "lineWidth": "1"}, "owner  
": "pmasscasestudies", "models": [ { "output_zones": [], "random_solids": [], "sol  
ids": [ { "name": "solid1", "geometry": { "name": "geo1", "lenght": [100, 400], "ty  
pe": "rectangle", "yaw": 0, "center": [50, 200]}, "material": { "name": "mat1", "  
roll": 0, "pitch": 0, "type": "constant", "yaw": 0}, "dimension": 2, "grid": { "g  
rid_type": "quadrilateral2D", "horizon_type": "circle", "hr": 2.5, "dx": 0.8, "d  
y": 0.8, "yaw": 0}}, "failure_zones": [], "name": "model1", "boundary_zones": [  
{ "name": "boundary1", "geometry": { "name": "geo1", "lenght": [6, 6], "type": "re  
ctangle", "yaw": 0, "center": [0, 0]}, "dimension": 2, "properties": { "type": "d  
isplacement", "value": 0, "direction": "X"}}, { "name": "boundary2", "geometry":  
{ "name": "geo1", "lenght": [100, 6], "type": "rectangle", "yaw": 0, "center": [5  
0, 0]}, "dimension": 2, "properties": { "type": "displacement", "value": 0, "dire  
ction": "Y"}}, { "name": "boundary3", "geometry": { "name": "geo1", "lenght": [100  
, 6], "type": "rectangle", "yaw": 0, "center": [50, 400]}, "dimension": 2, "prop  
erties": { "type": "displacement", "value": 0.2, "direction": "Y"}}, "cracks": [  
], "laminate_solids": [], "dimension": 2, "voids": [ { "name": "void1", "dimension  
": 2, "geometry": { "name": "geo1", "r": 20, "type": "circle", "center": [50, 200  
]}}, "inclusions": []], "project_id": "a87bf8d4-aea1-435a-84d1-5ef0bf2983ba",  
"description": "Stress analysis, Isotropic, 2D", "type": "type1" }
```

Undeformed Grid

Number of Points: 60546

min-x: 0.4

max-x: 99.60000000000001

min-y: 0.4

max-y: 399.6



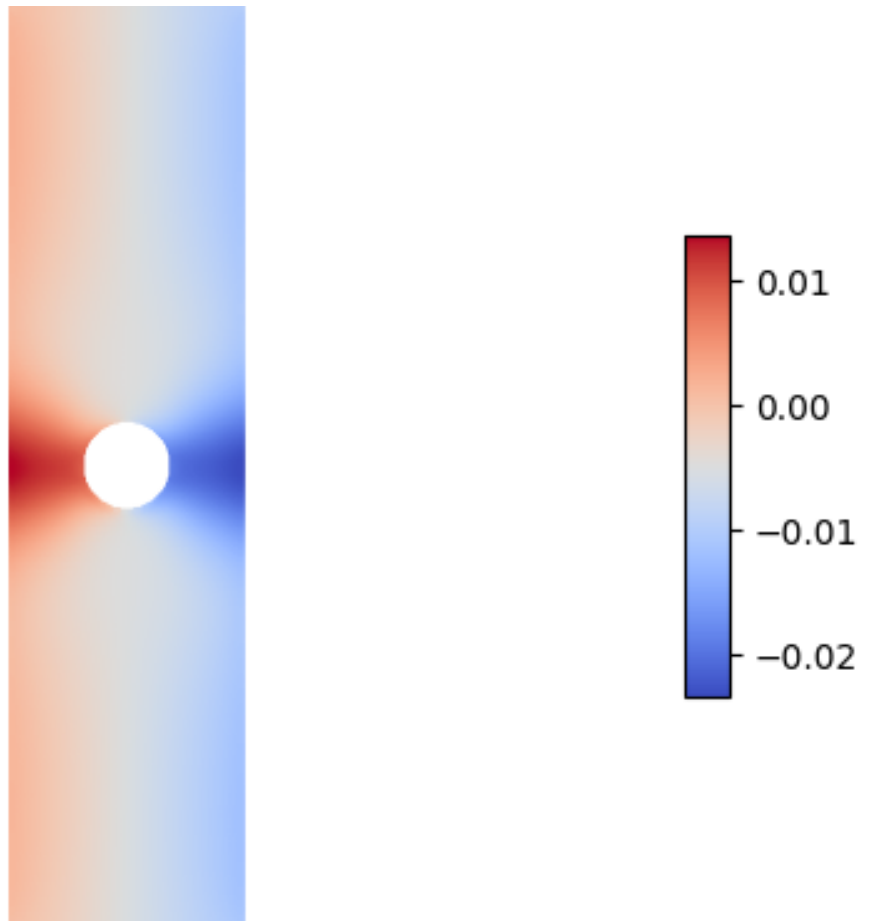
Run Name: run0

Solution Output: out_0_0

Field: u-x

min-u-x: -0.023392

max-u-x: 0.0136183



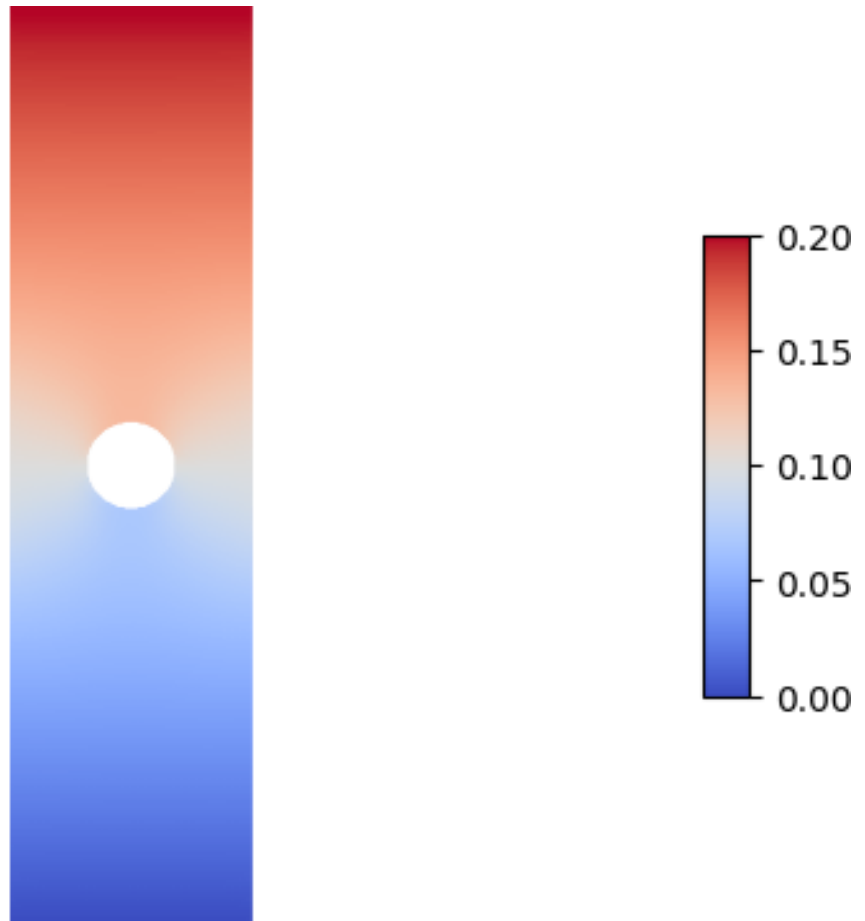
Run Name: run0

Solution Output: out_0_0

Field: u-y

min-u-y: 0.0

max-u-y: 0.2



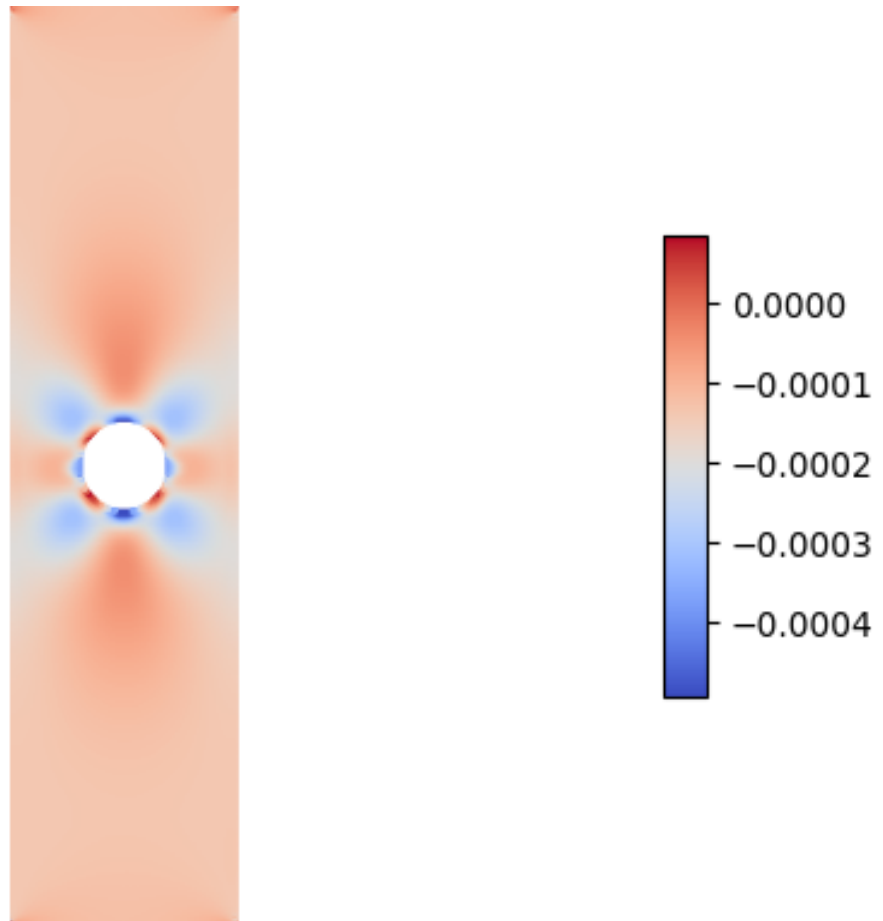
Run Name: run0

Solution Output: out_0_0

Field: e-x

min-e-x: -0.000491365

max-e-x: 8.59096e-05



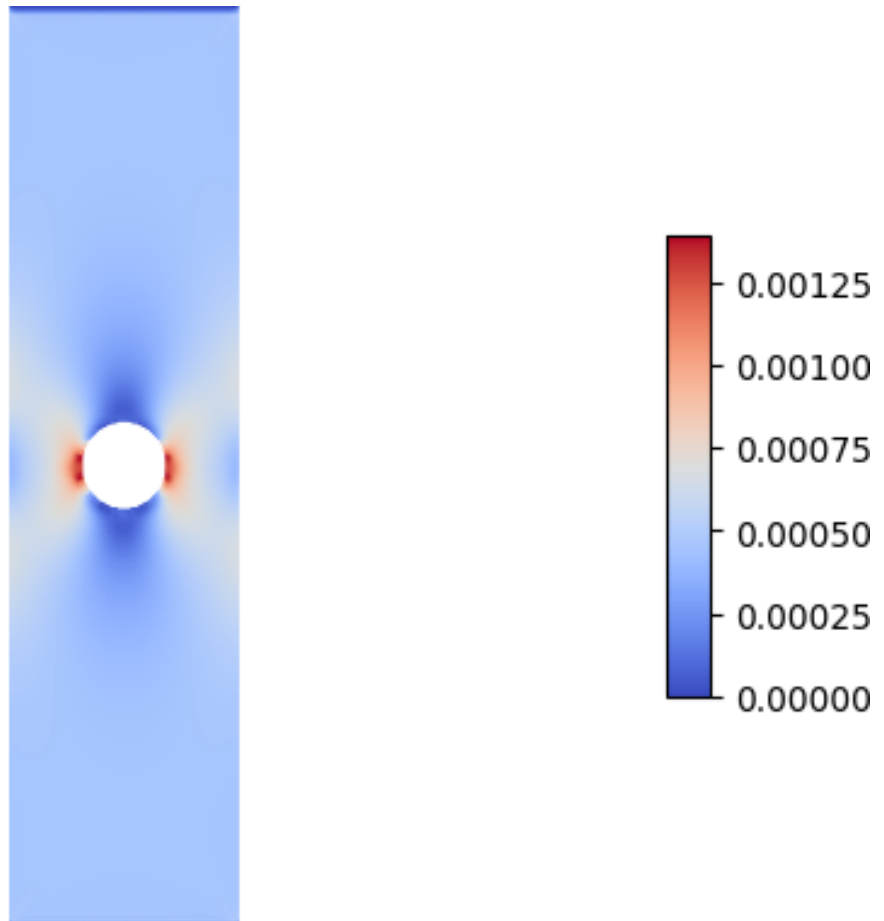
Run Name: run0

Solution Output: out_0_0

Field: e-y

min-e-y: -3.28577e-16

max-e-y: 0.0013961



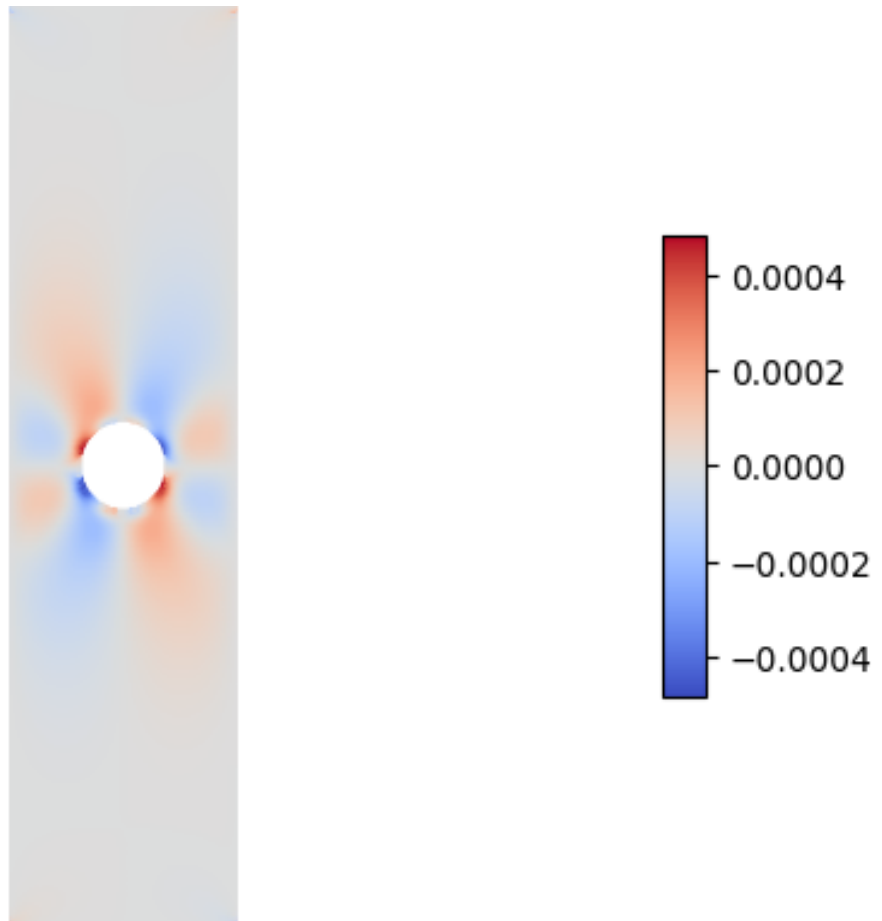
Run Name: run0

Solution Output: out_0_0

Field: e-xy

min-e-xy: -0.000482078

max-e-xy: 0.000482611



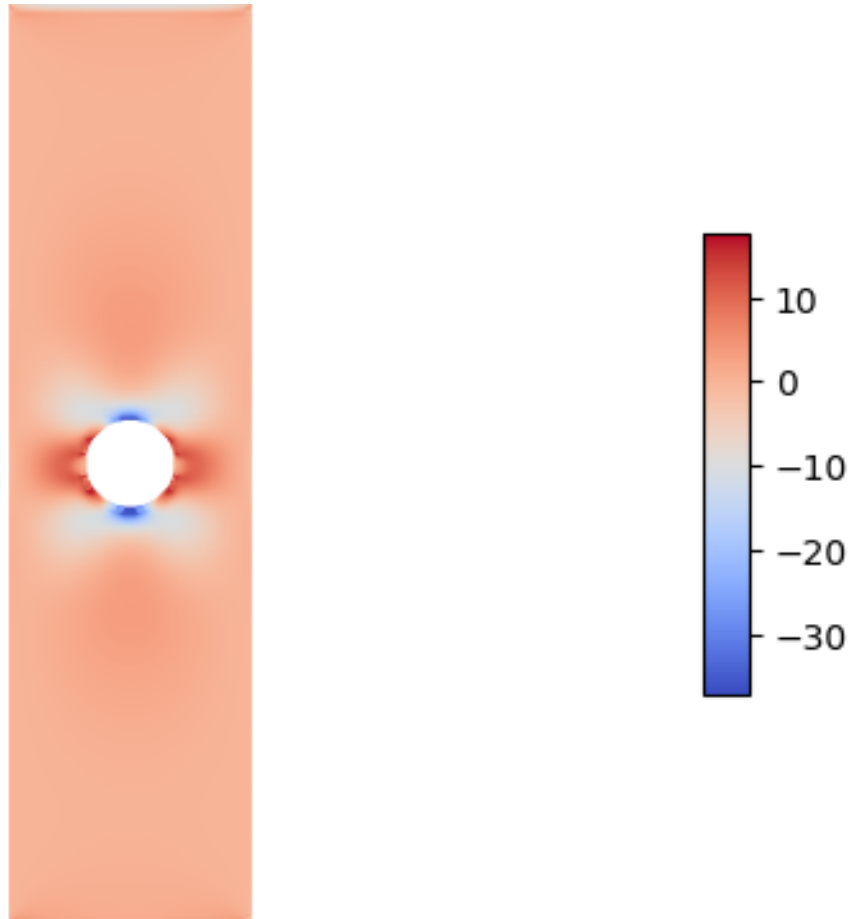
Run Name: run0

Solution Output: out_0_0

Field: s-x

min-s-x: -37.1176

max-s-x: 17.6382



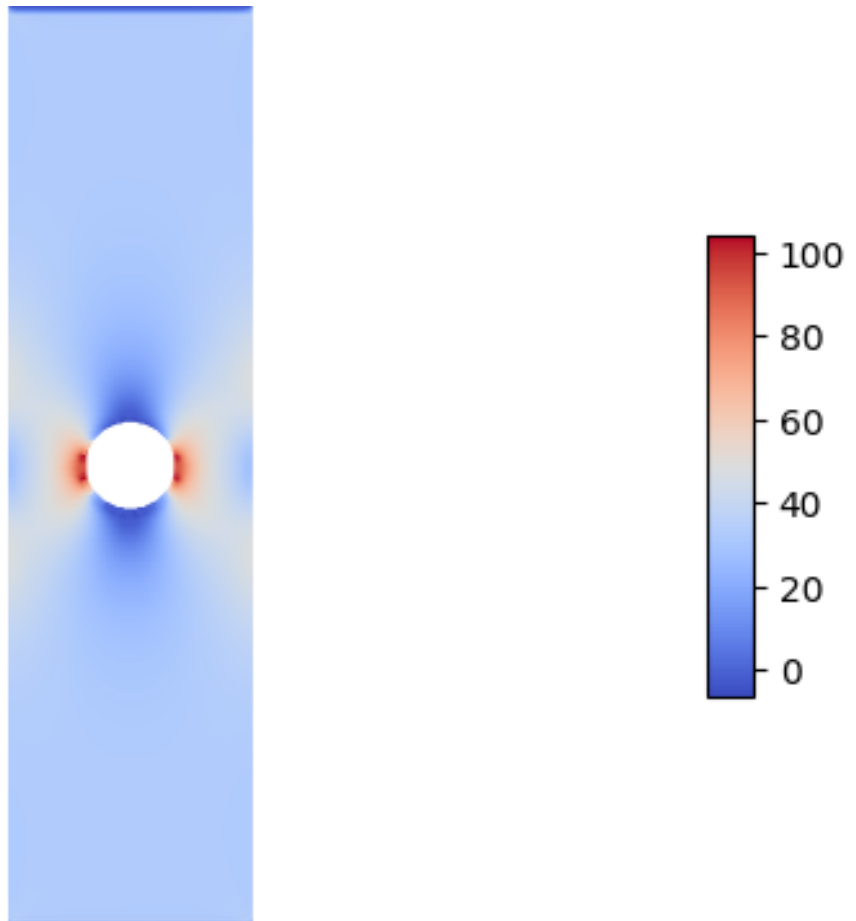
Run Name: run0

Solution Output: out_0_0

Field: s-y

min-s-y: -6.14731

max-s-y: 104.16



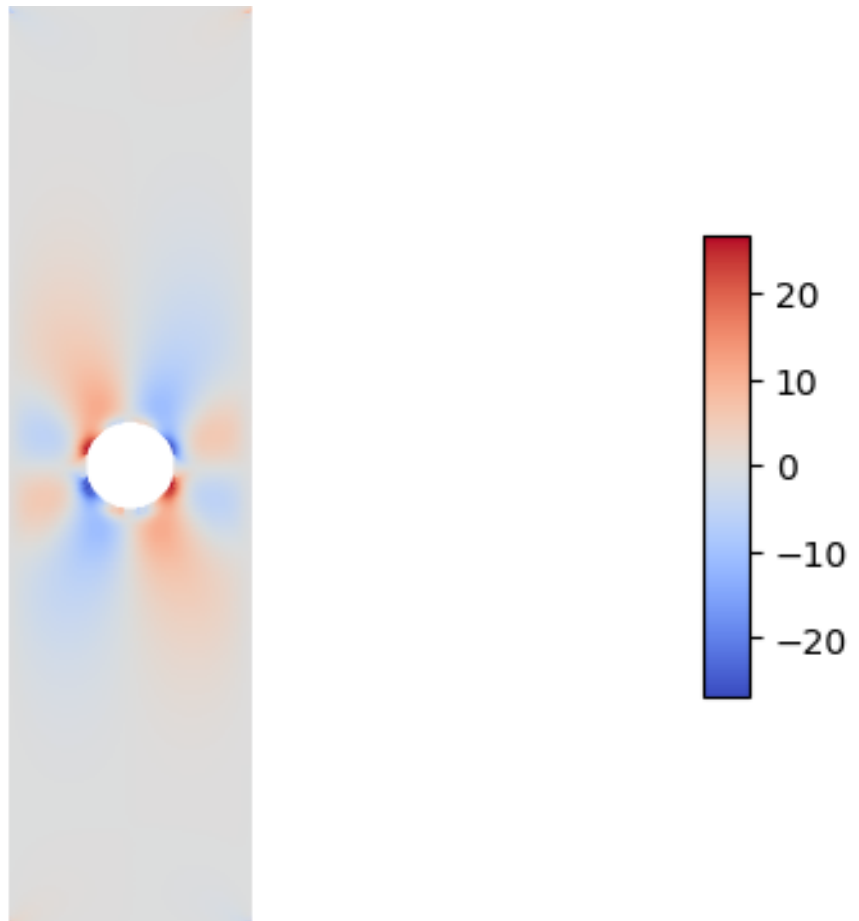
Run Name: run0

Solution Output: out_0_0

Field: s-xy

min-s-xy: -26.6997

max-s-xy: 26.7292



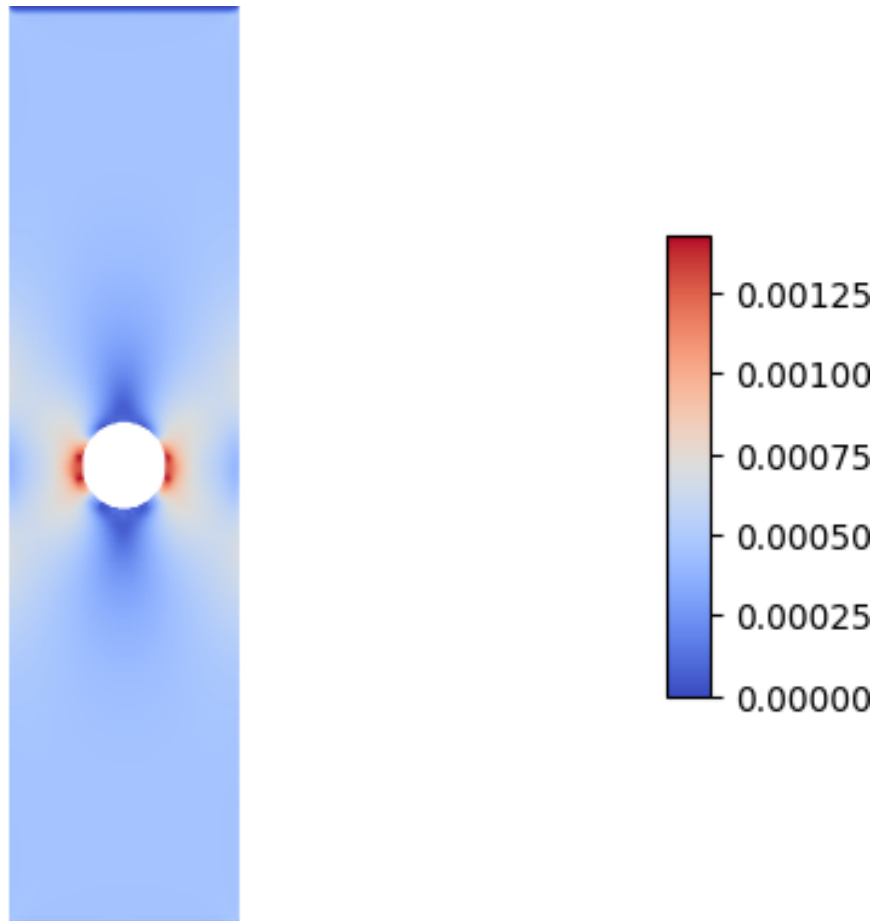
Run Name: run0

Solution Output: out_0_0

Field: e-p1

min-e-p1: 0.0

max-e-p1: 0.00142785



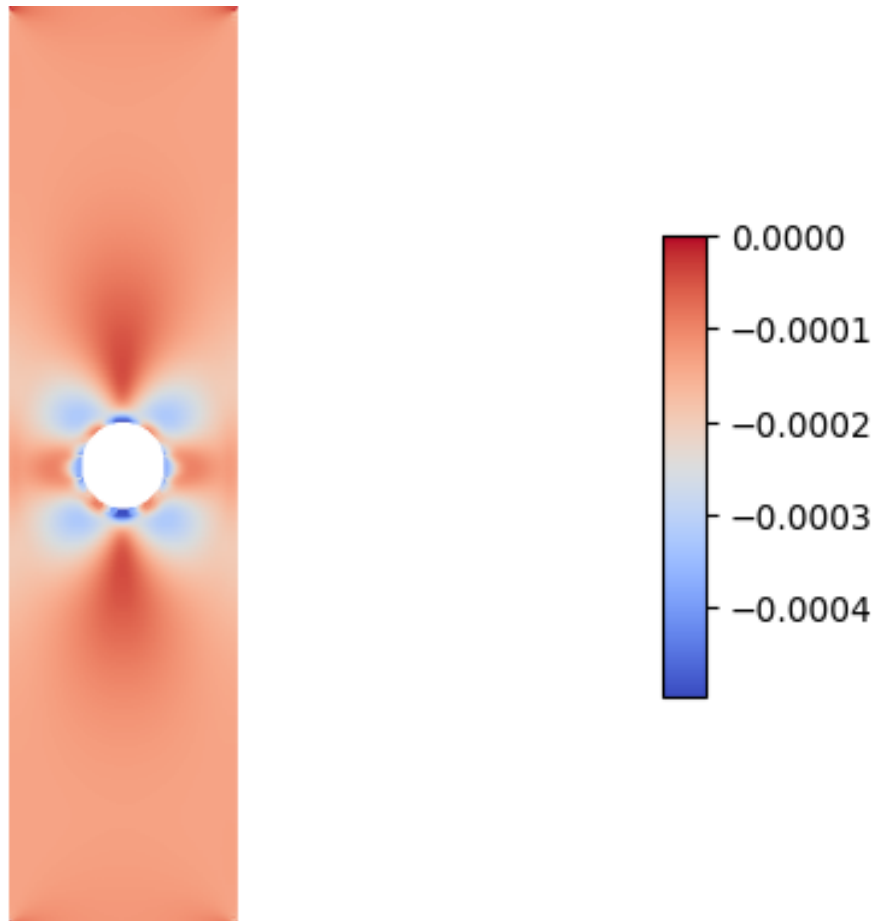
Run Name: run0

Solution Output: out_0_0

Field: e-p2

min-e-p2: -0.000494294

max-e-p2: 0.0



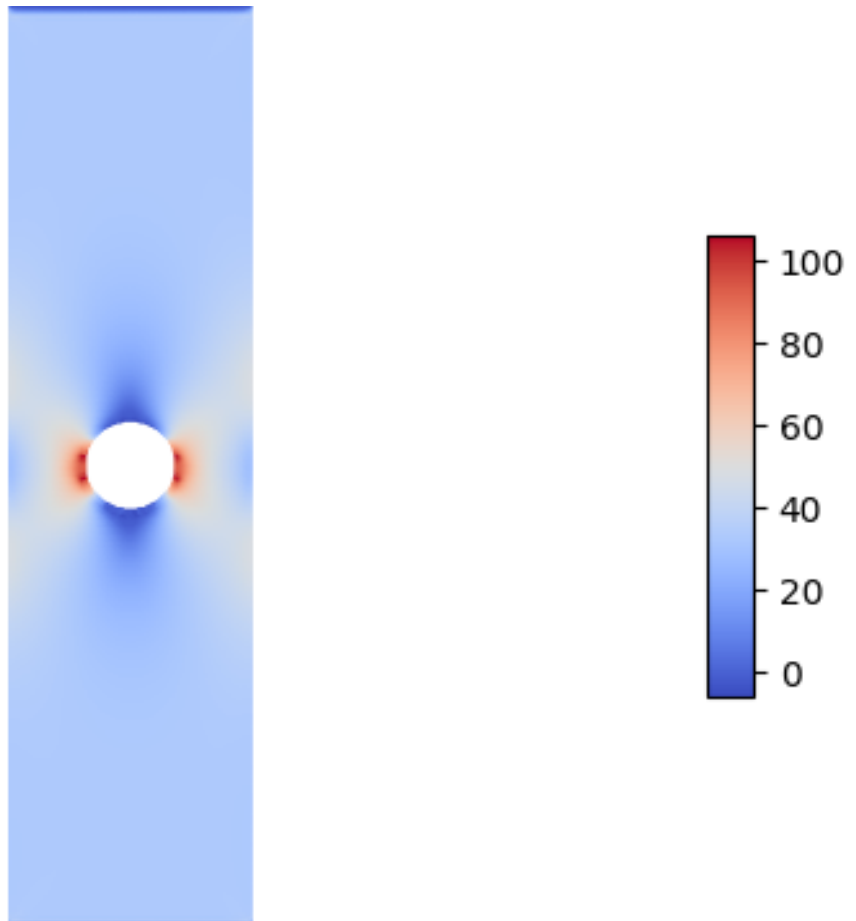
Run Name: run0

Solution Output: out_0_0

Field: s-p1

min-s-p1: -5.90449

max-s-p1: 105.919



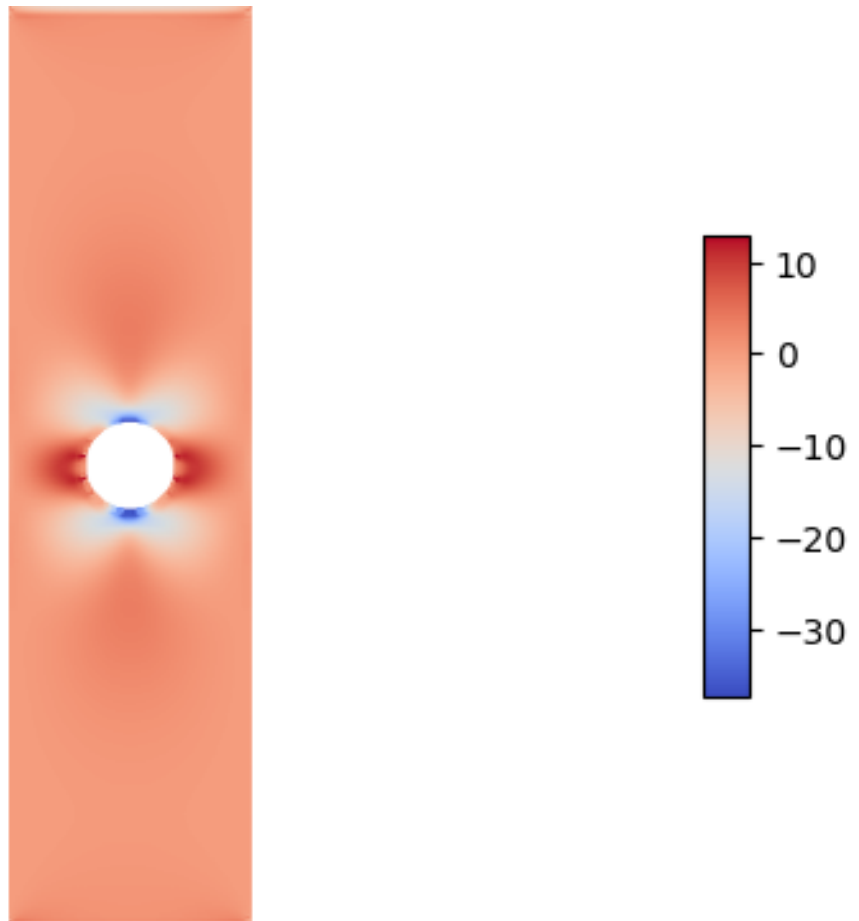
Run Name: run0

Solution Output: out_0_0

Field: s-p2

min-s-p2: -37.3605

max-s-p2: 12.9141



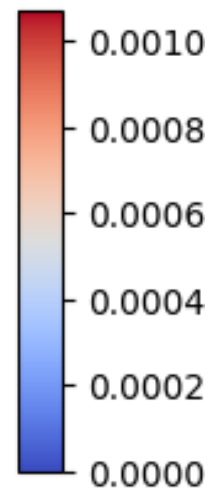
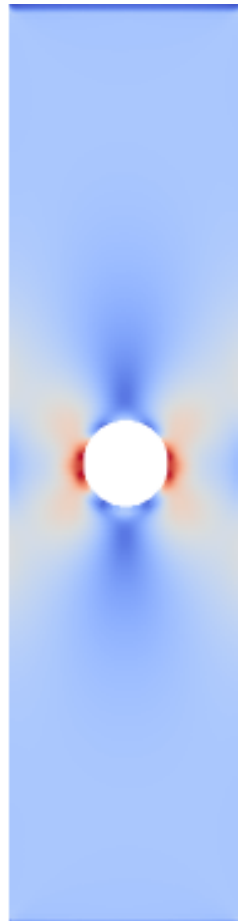
Run Name: run0

Solution Output: out_0_0

Field: e-eq

min-e-eq: 0.0

max-e-eq: 0.00107103



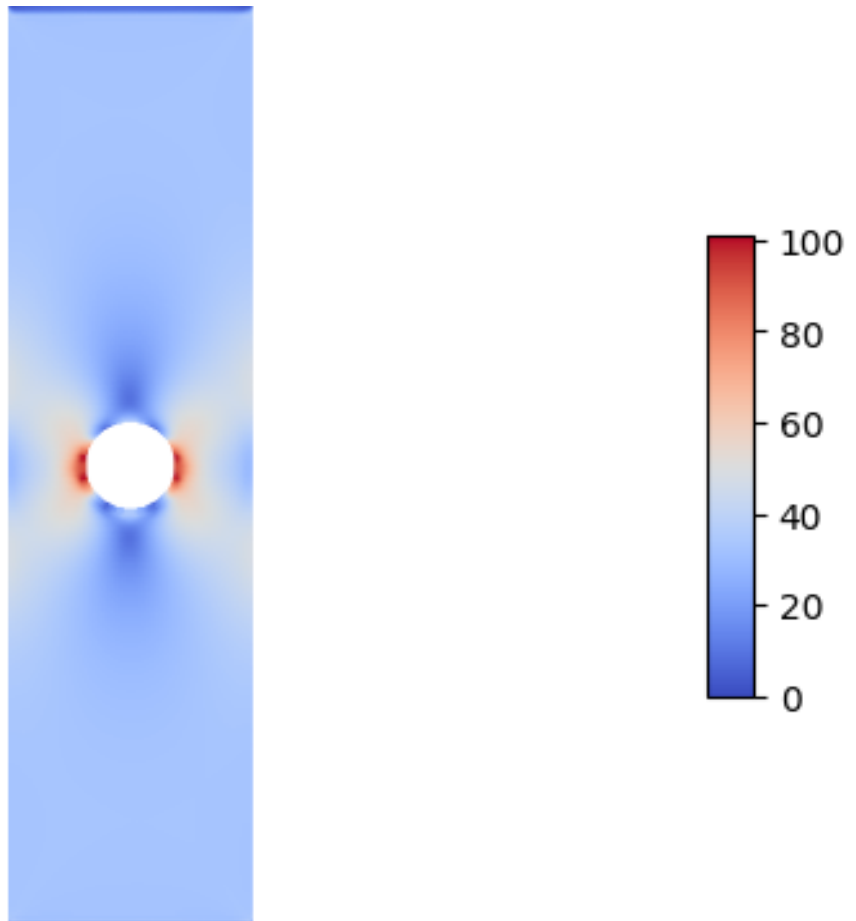
Run Name: run0

Solution Output: out_0_0

Field: s-eq

min-s-eq: 0.0

max-s-eq: 101.129



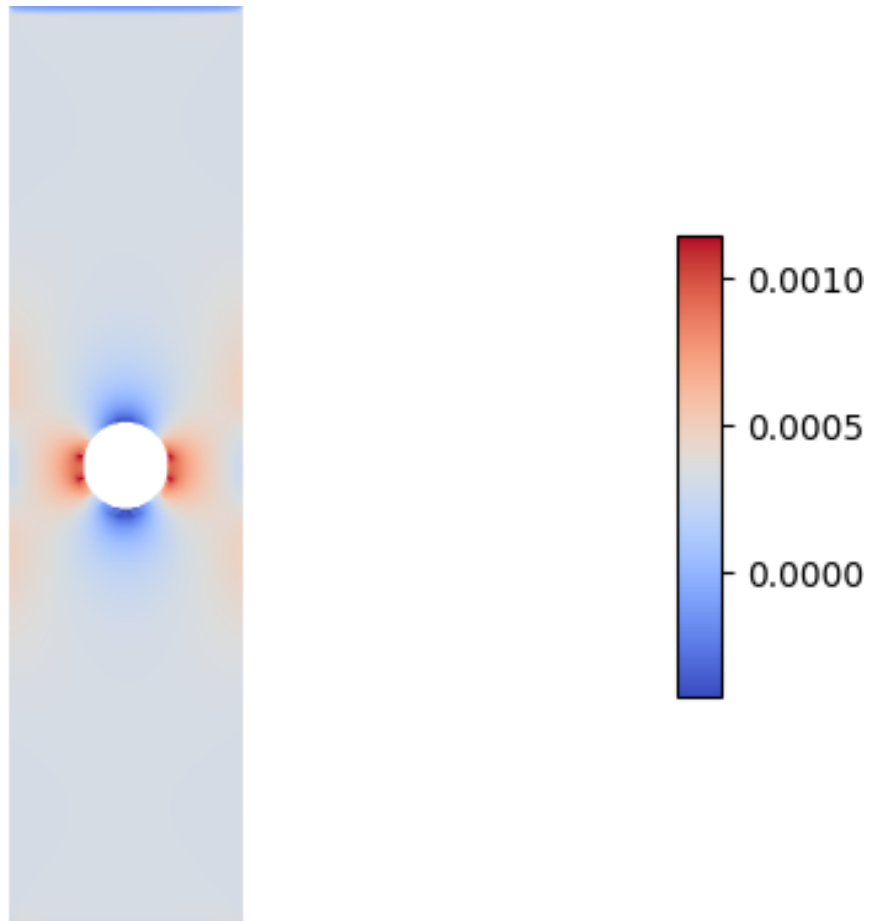
Run Name: run0

Solution Output: out_0_0

Field: e-vol

min-e-vol: -0.000420665

max-e-vol: 0.00114849



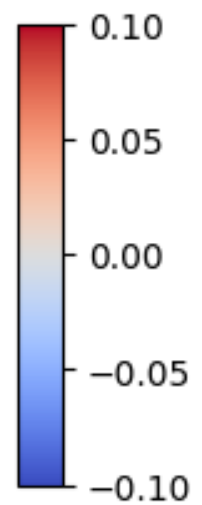
Run Name: run0

Solution Output: out_0_0

Field: damage-ini

min-damage-ini: 0.0

max-damage-ini: 0.0



Run Name: run0

Solution Output: out_0_0

Field: damage

min-damage: 0.0

max-damage: 0.0

