



## **Simulation Summary Report**

Project Title: Dynamic Fracture

Description: 2D, Isotropic, Transient

Created By: pmasscasestudies

Project Created: 04/03/2023-23:45

Report Created: 10/31/2023-10:28

Analysis Type: Fracture Analysis

Solver: transient

Dimension: 2

```
{ "project_name": "Dynamic Fracture", "dateTime": { "month": "04", "hour": "23", "year": "2023", "day": "03", "minute": "45"}, "feModels": [], "materials": [ { "density": 2.235e-06, "elastic_properties": { "E": 65000, "G": 27083, "nu": 0.2}, "name": "mat1", "failure_parameters": { "Scr": 0, "Xc": 0, "type": "Critical-Stretch", "Eccr": 0, "ft": 0, "S23": 0, "Stcr": 0, "w0": 0, "Xt": 0, "s0": 0.01, "Etr": 0, "ef": 0, "c": 0, "Yc": 0, "D1": 0, "D2": 0, "D3": 0, "D4": 0, "phi": 0, "D5": 0, "Ecr": 0, "S12": 0, "Scrr": 0, "Yt": 0, "fc": 0}, "behavior": "elastic", "type": "isotropic", "dimension": 2}, "analysis": { "load_segments": [ { "name": "sg1", "type": "transient", "num_save": 500, "ratio_segment": 1, "num_segment": 1001}, "iteration_damage": "false", "max_bond_breakage": 6, "thickness": 1, "zero_energy": { "type": "bond-associated", "bond_associated_family": 1.5}, "name": "analysis1", "type": "Fracture Analysis", "dimension": 2, "inclusion_damage": "true", "solver": "transient", "time_increment": 1e-08, "quasi_static": { "tolerance": 1e-07, "precondition": 1e-10, "max_iteration": 2000}, "plotSetting": { "markerSize": "5", "markerOpacity": "1.1", "cameraEye": { "x": "1.8", "y": "1.8", "z": "1.8"}, "edgeColor": "#ce4646", "edgeWidth": "0", "markerColor": "#0616f4", "colorscale": "RdBu", "materialColor": "#181ee2", "lineColor": "#e718ba", "damageColor": "#37f156", "aspectRatio": { "x": "1.8", "y": "1.8", "z": "1.8"}, "lineWidth": "1"}, "owner": "pmasscasestudies", "models": [ { "output_zones": [], "random_solids": [], "solids": [ { "name": "part1", "geometry": { "name": "geo1", "length": [100, 40], "type": "rectangle", "yaw": 0, "center": [50, 20]}, "material": { "name": "mat1", "roll": 0, "pitch": 0, "type": "constant", "yaw": 0}, "dimension": 2, "grid": { "grid_type": "quadrilateral2D", "horizon_type": "circle", "hr": 0.8, "dx": 0.25, "dy": 0.25, "yaw": 0}}, "failure_zones": [ { "name": "nf1", "dimension": 2, "geometry": { "name": "geo1", "length": [100, 10], "type": "rectangle", "yaw": 0, "center": [50, 0]}, { "name": "nf2", "dimension": 2, "geometry": { "name": "geo1", "length": [100, 10], "type": "rectangle", "yaw": 0, "center": [50, 40]}], "name": "model1", "boundary_zones": [ { "name": "bc1", "geometry": { "name": "geo1", "length": [100, 4], "type": "rectangle", "yaw": 0, "center": [50, 0]}, "dimension": 2, "properties": { "type": "displacement", "value": -0.1, "direction": "Y"}}, { "name": "bc2", "geometry": { "name": "geo1", "length": [100, 4], "type": "rectangle", "yaw": 0, "center": [50, 40]}, "dimension": 2, "properties": { "type": "displacement", "value": 0.1, "direction": "Y"}}, "cracks": [ { "name": "crack1", "dimension": 2, "geometry": { "name": "geo1", "y1": 20, "x1": 0, "y2": 20, "x2": 50, "type": "line_crack"}}, "laminates_solids": [], "dimension": 2, "voids": [], "inclusions": []}, "project_id": "23554d36-5999-450e-a8bc-51d039e5f9f8", "description": "2D, Isotropic, Transient" }
```

**Undeformed Grid**

Number of Points: 64000

min-x: 0.125

max-x: 99.875

min-y: 0.125

max-y: 39.875



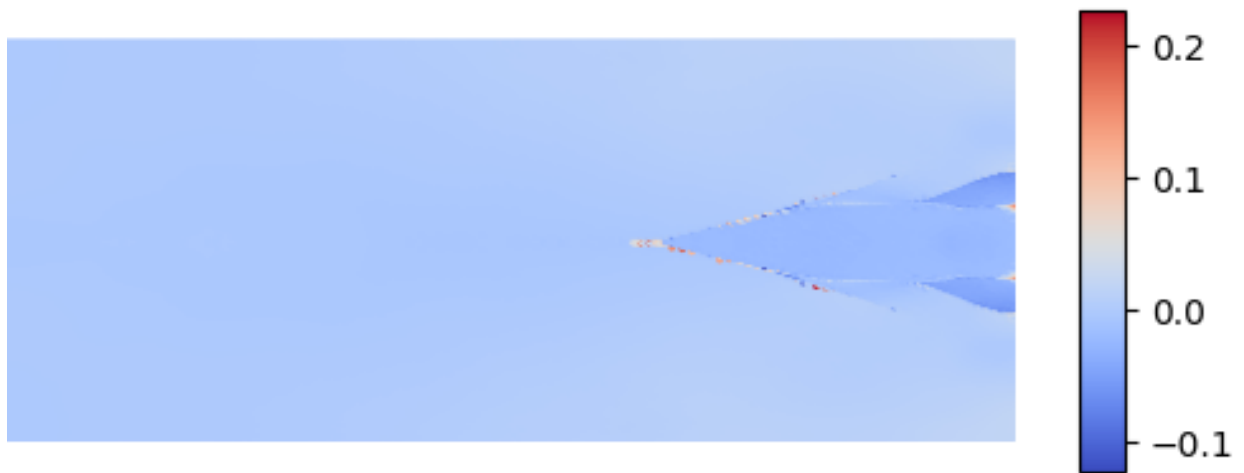
**Run Name: run0**

**Solution Output: out\_0\_20**

Field: u-x

min-u-x: -0.121763

max-u-x: 0.227383



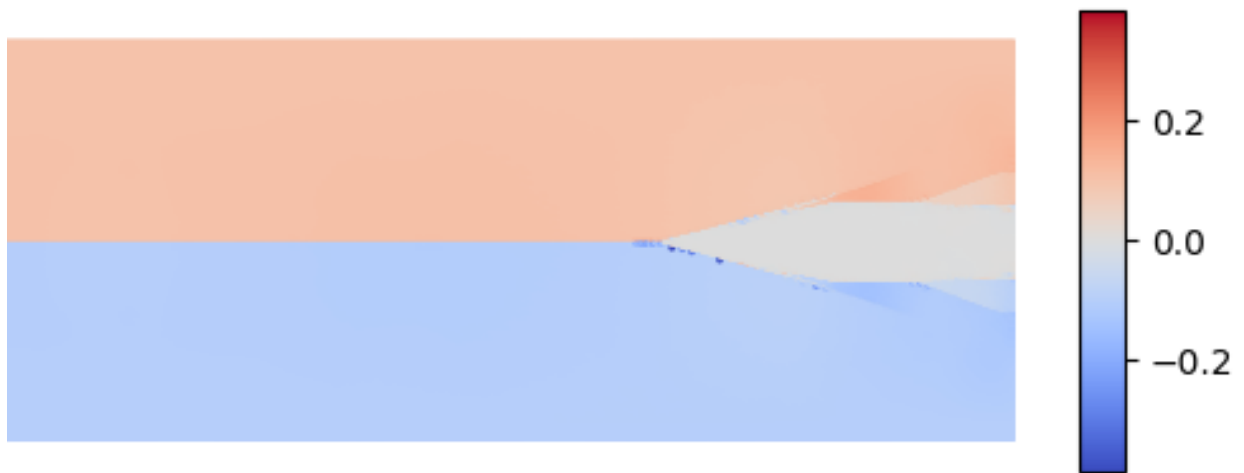
**Run Name: run0**

**Solution Output: out\_0\_20**

Field: u-y

min-u-y: -0.385657

max-u-y: 0.385657



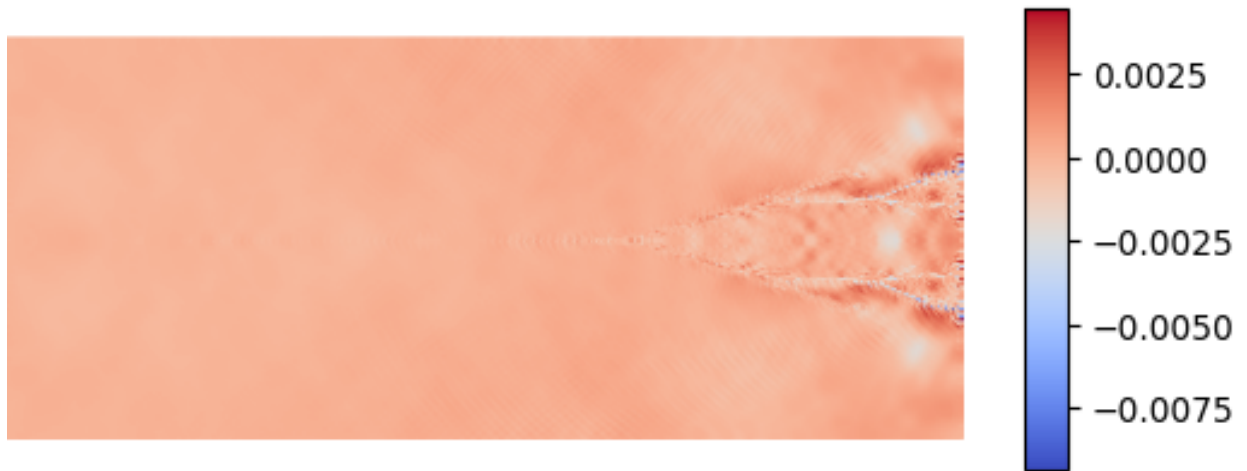
**Run Name: run0**

**Solution Output: out\_0\_20**

Field: e-x

min-e-x: -0.00932874

max-e-x: 0.00447551



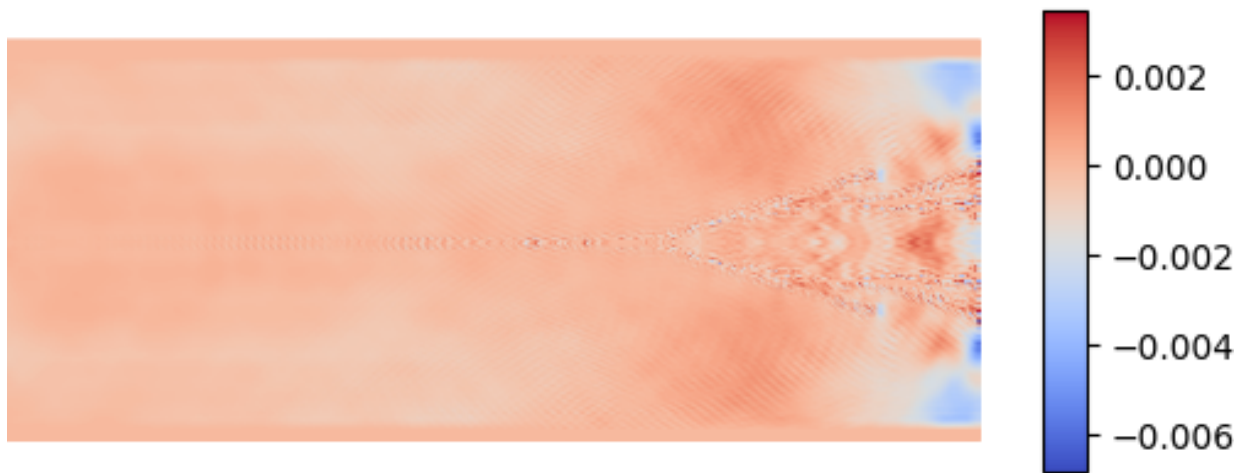
**Run Name: run0**

**Solution Output: out\_0\_20**

Field: e-y

min-e-y: -0.00682516

max-e-y: 0.00347767



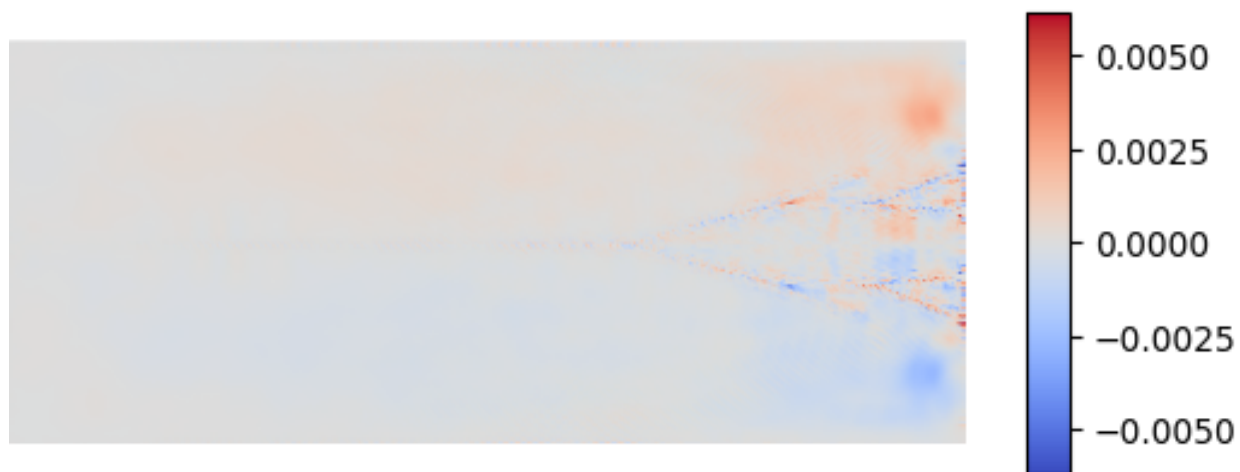
**Run Name: run0**

**Solution Output: out\_0\_20**

Field: e-xy

min-e-xy: -0.00615764

max-e-xy: 0.00615764





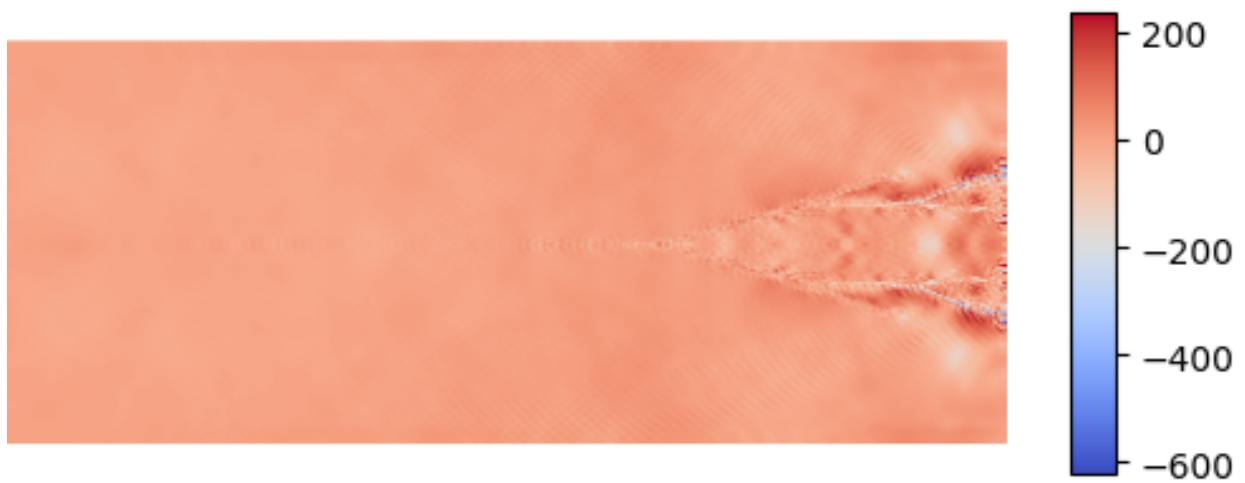
**Run Name: run0**

**Solution Output: out\_0\_20**

Field: s-x

min-s-x: -619.338

max-s-x: 239.842



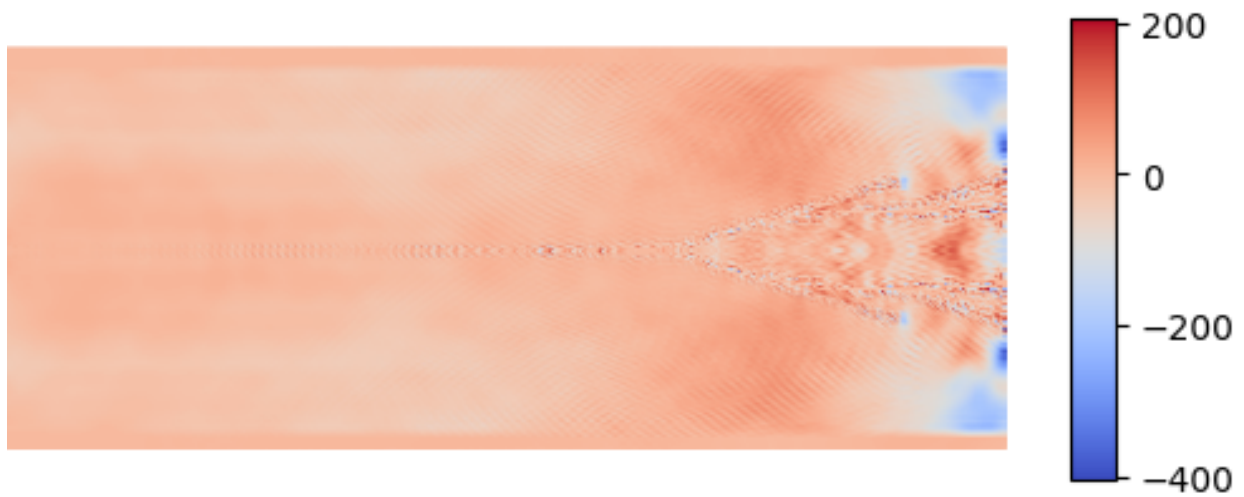
**Run Name: run0**

**Solution Output: out\_0\_20**

Field: s-y

min-s-y: -401.514

max-s-y: 205.725



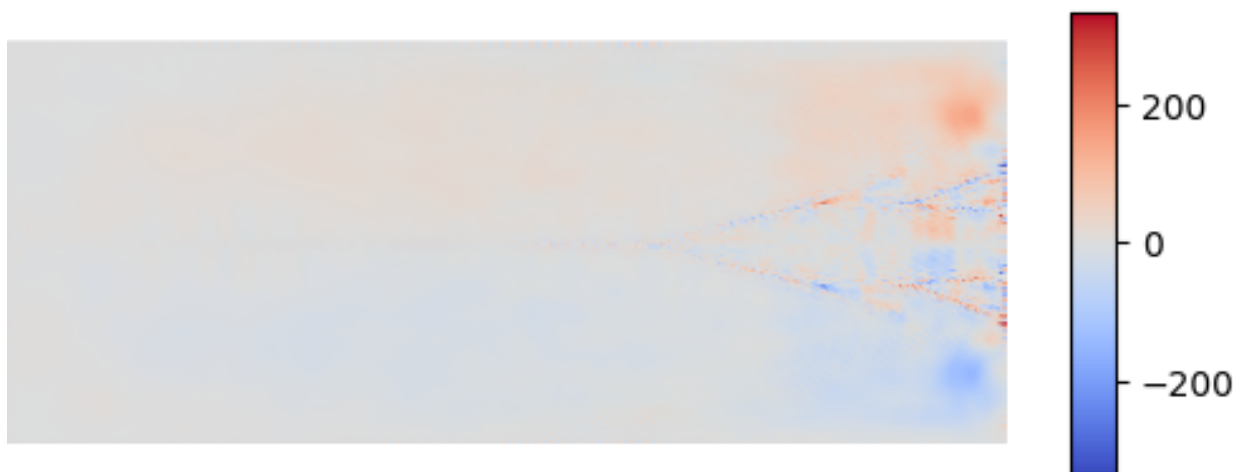
**Run Name: run0**

**Solution Output: out\_0\_20**

Field: s-xy

min-s-xy: -333.539

max-s-xy: 333.539



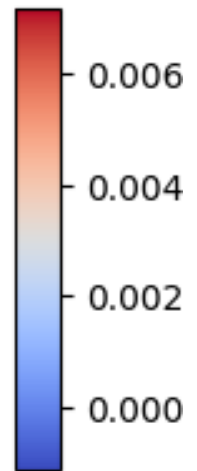
**Run Name: run0**

**Solution Output: out\_0\_20**

Field: e-p1

min-e-p1: -0.00110631

max-e-p1: 0.00718237



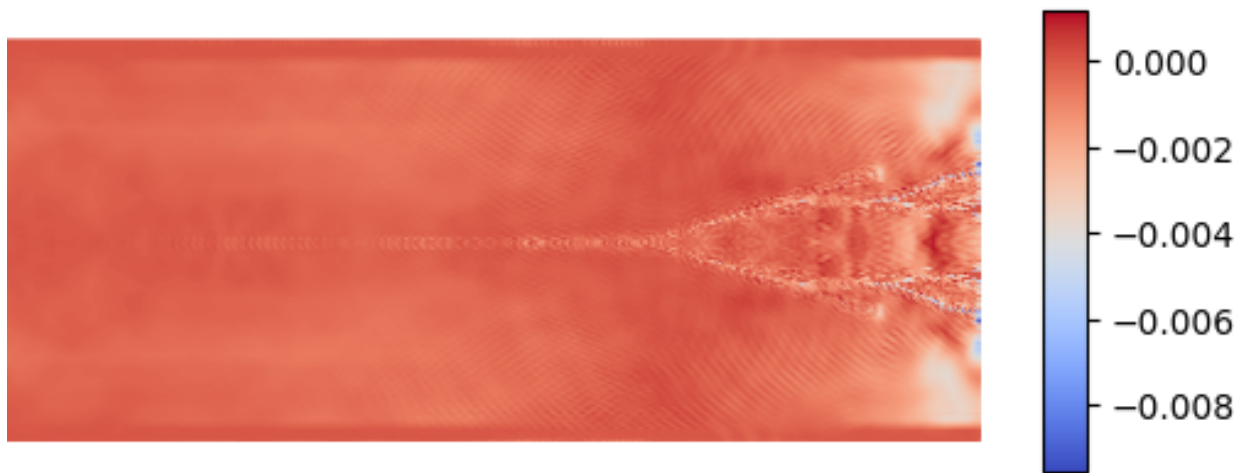
**Run Name: run0**

**Solution Output: out\_0\_20**

Field: e-p2

min-e-p2: -0.00953202

max-e-p2: 0.00116811



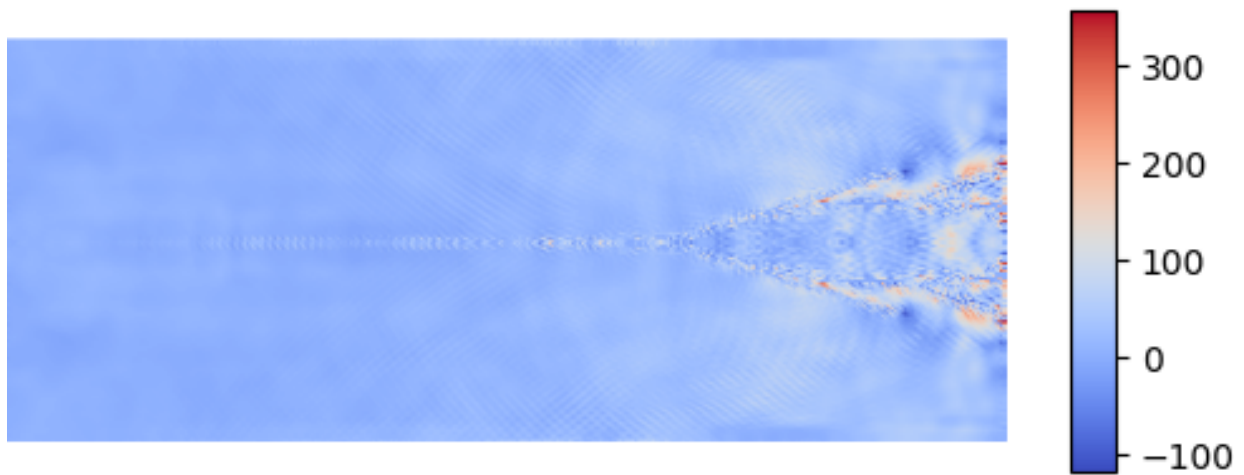
**Run Name: run0**

**Solution Output: out\_0\_20**

Field: s-p1

min-s-p1: -117.528

max-s-p1: 357.227



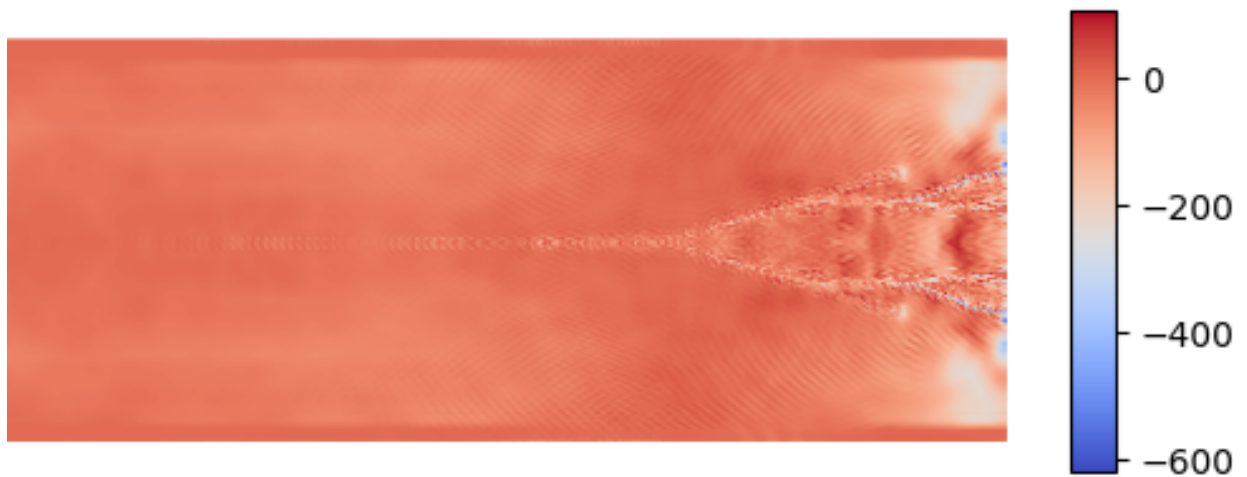
**Run Name: run0**

**Solution Output: out\_0\_20**

Field: s-p2

min-s-p2: -619.39

max-s-p2: 107.379



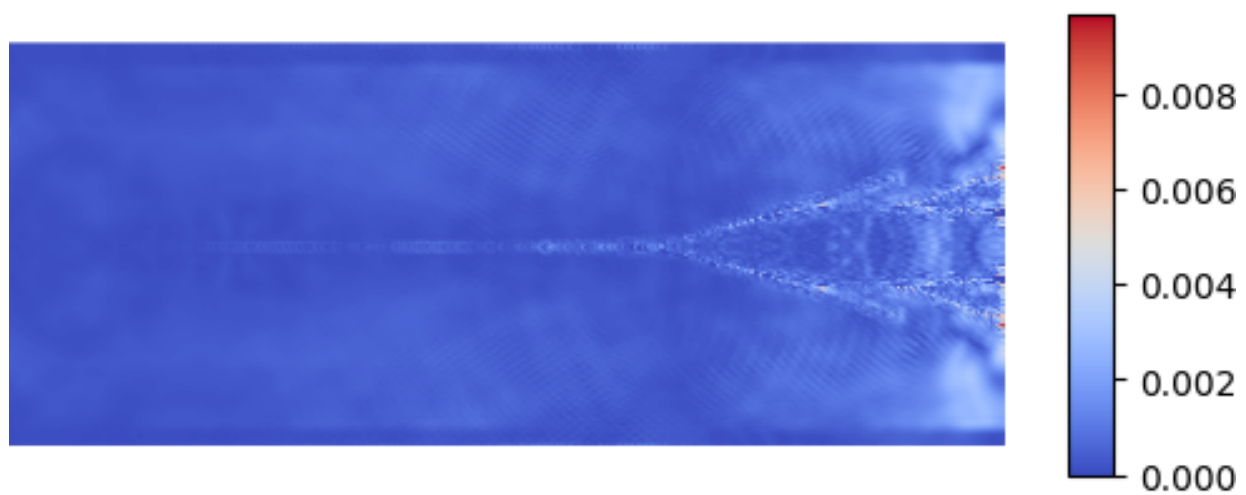
**Run Name: run0**

**Solution Output: out\_0\_20**

Field: e-eq

min-e-eq: 0.0

max-e-eq: 0.00968179





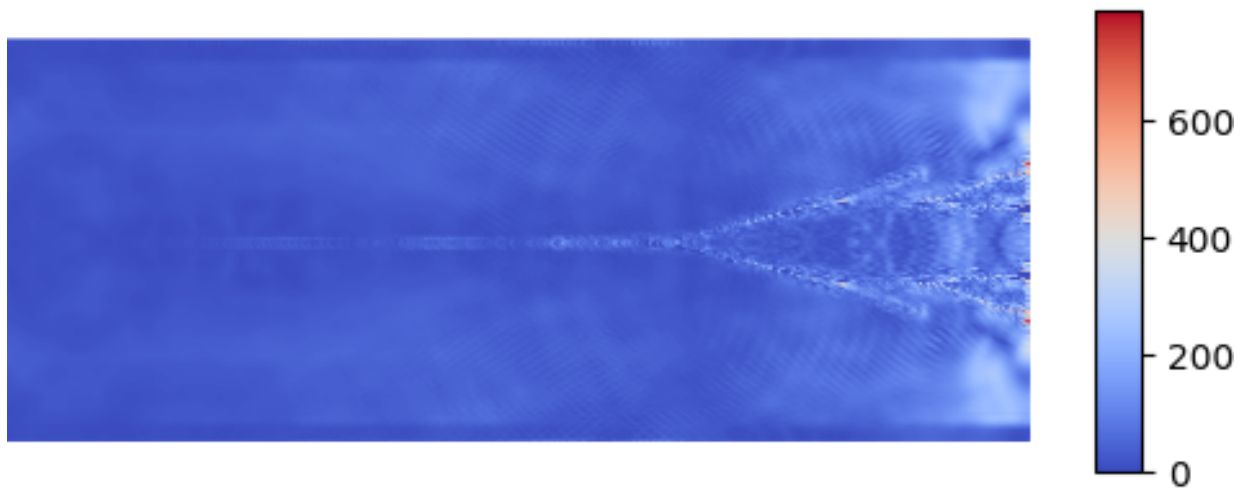
**Run Name: run0**

**Solution Output: out\_0\_20**

Field: s-eq

min-s-eq: 0.0

max-s-eq: 789.856



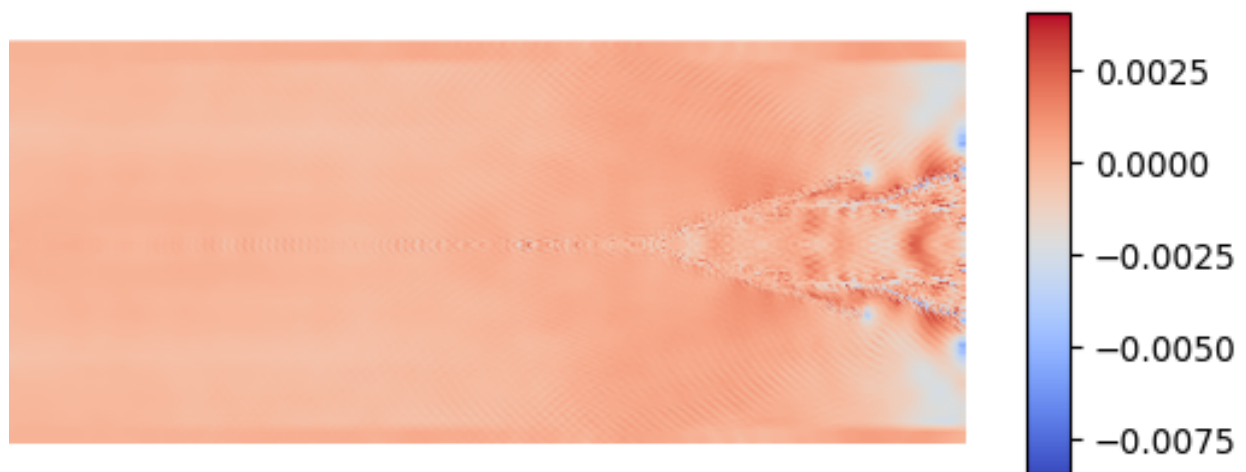
**Run Name: run0**

**Solution Output: out\_0\_20**

Field: e-vol

min-e-vol: -0.00842922

max-e-vol: 0.00407502



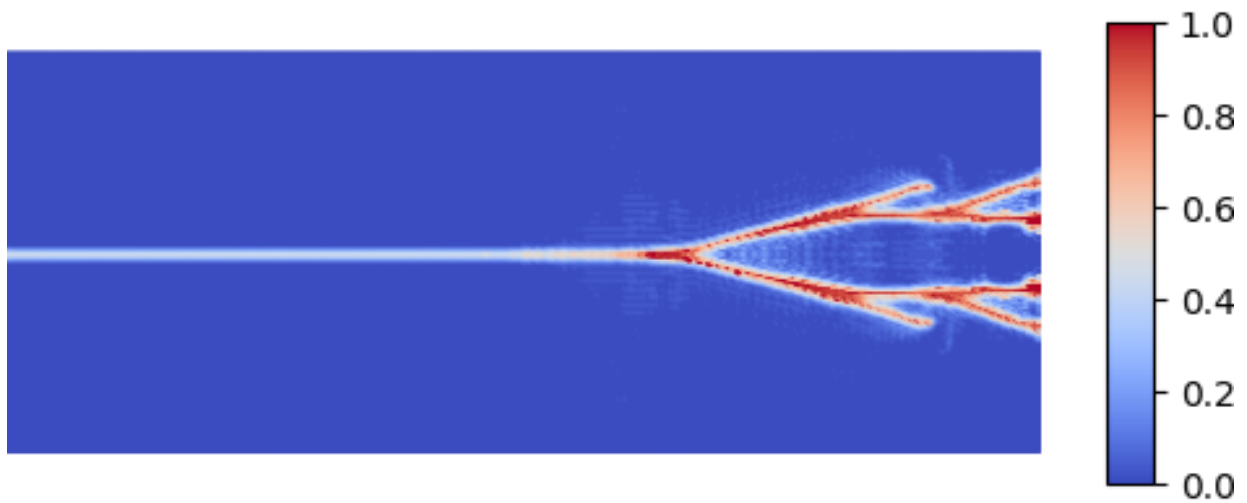
**Run Name: run0**

**Solution Output: out\_0\_20**

Field: damage-ini

min-damage-ini: 0.0

max-damage-ini: 1.0



**Run Name: run0**

**Solution Output: out\_0\_20**

Field: damage

min-damage: 0.0

max-damage: 1.0

