

## **Simulation Summary Report**

Project Title: Drag brace

Description: 3D, Isotropic, Quasi-Static, Fracture Analysis

Created By: pmasscasestudies

Project Created: 07/18/2023-09:07

Report Created: 10/31/2023-10:34

Analysis Type: Fracture Analysis

Solver: quasi-static

Dimension: 3





















```
yaw": 0}, "dimension": 3, "grid": {"grid_type": "quadrilateral3D", "dx": 0.05, "dy": 0.05, "dz": 0.05, "roll": 0, "horizon_type": "sphere", "hr": 0.16, "pitch": 0, "yaw": 0}}, {"name": "solid6", "geometry": {"r": 1, "center": [7.2, 0.8, 0], "name": "geo1", "roll": 90, "pitch": 0, "type": "cylinder", "yaw": 0, "height": 0.4}, "material": {"name": "mat1", "roll": 0, "pitch": 0, "type": "constant", "yaw": 0}, "dimension": 3, "grid": {"grid_type": "cylindrical", "dz": 0.05, "roll": 90, "yc": 0.8, "horizon_type": "sphere", "hr": 0.16, "xc": 7.2, "pitch": 0, "dr": 0.05, "yaw": 0}}, {"name": "solid7", "geometry": {"r": 1, "center": [7.2, -0.8, 0], "name": "geo1", "roll": 90, "pitch": 0, "type": "cylinder", "yaw": 0, "height": 0.4}, "material": {"name": "mat1", "roll": 0, "pitch": 0, "type": "constant", "yaw": 0}, "dimension": 3, "grid": {"grid_type": "cylindrical", "dz": 0.05, "roll": 90, "yc": -0.8, "horizon_type": "sphere", "hr": 0.16, "xc": 7.2, "pitch": 0, "dr": 0.05, "yaw": 0}}, "failure_zones": [], "name": "model1", "boundary_zones": [{"name": "boundary1", "geometry": {"r": 0.6, "center": [0, 0, 0], "name": "geo1", "roll": 90, "pitch": 0, "type": "cylinder", "yaw": 0, "height": 2}, "dimension": 3, "properties": {"type": "displacement", "value": 0, "direction": "X"}}, {"name": "boundary2", "geometry": {"r": 0.6, "center": [0, 0, 0], "name": "geo1", "roll": 90, "pitch": 0, "type": "cylinder", "yaw": 0, "height": 2}, "dimension": 3, "properties": {"type": "displacement", "value": 0, "direction": "Y"}}, {"name": "boundary3", "geometry": {"r": 0.6, "center": [0, 0, 0], "name": "geo1", "roll": 90, "pitch": 0, "type": "cylinder", "yaw": 0, "height": 2}, "dimension": 3, "properties": {"type": "displacement", "value": 0, "direction": "Z"}}, {"name": "boundary4", "geometry": {"r": 1.02, "center": [7.2, 0, 0], "name": "geo1", "roll": 90, "pitch": 0, "type": "cylinder", "yaw": 0, "height": 2.02}, "dimension": 3, "properties": {"type": "displacement", "value": 0.1, "direction": "X"}}], "cracks": [], "laminated_solids": [], "dimension": 3, "voids": [{"name": "void1", "dimension": 3, "geometry": {"r": 0.3, "center": [0, 0, 0], "name": "geo1", "roll": 90, "pitch": 0, "type": "cylinder", "yaw": 0, "height": 2}}, {"name": "void2", "dimension": 3, "geometry": {"r": 0.6, "center": [5.5, 0, 0], "name": "geo1", "roll": 0, "pitch": 0, "type": "cylinder", "yaw": 0, "height": 1}}, {"name": "void3", "dimension": 3, "geometry": {"length": [1, 1.2, 1], "center": [6, 0, 0], "name": "geo1", "roll": 0, "pitch": 0, "type": "cuboid", "yaw": 0}}, {"name": "void4", "dimension": 3, "geometry": {"r": 0.8, "center": [7.2, 0, 0], "name": "geo1", "roll": 90, "pitch": 0, "type": "cylinder", "yaw": 0, "height": 2}}], "inclusions": [], "inclusion_damage": "true", "project_id": "9fd2291c-e493-4601-b957-3298b3bf9d2e", "description": "3D, Isotropic, Quasi-Static, Fracture Analysis"}
```

### Undeformed Grid

Number of Points: 69991

min-x: -0.5744676161837823

max-x: 8.175

min-y: -0.9750000000000002

max-y: 0.9750000000000002

min-z: -0.9749204943030905

max-z: 0.9749204943030905



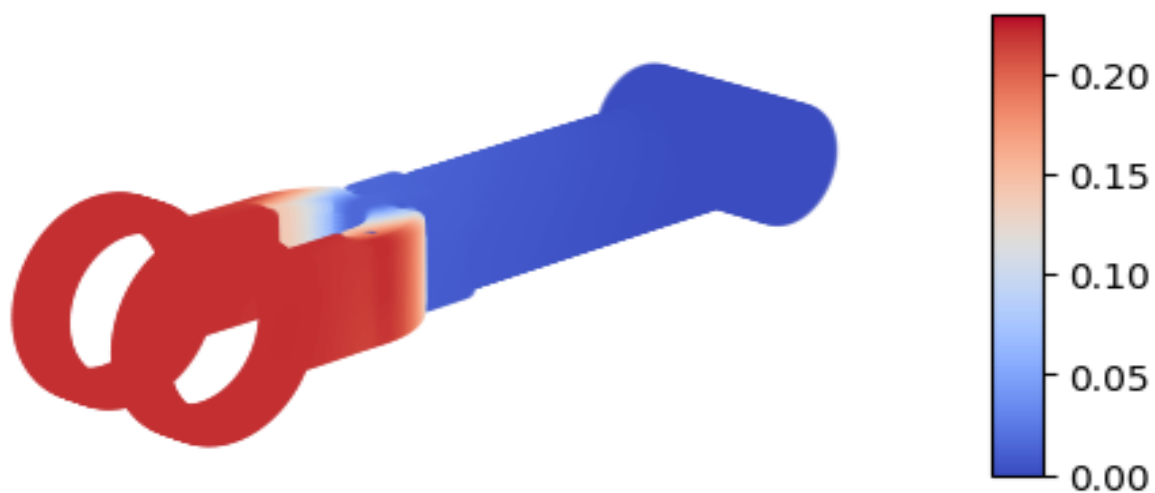
**Run Name: run0**

**Solution Output: out\_1\_39**

Field: u-x

min-u-x: 0.0

max-u-x: 0.229919



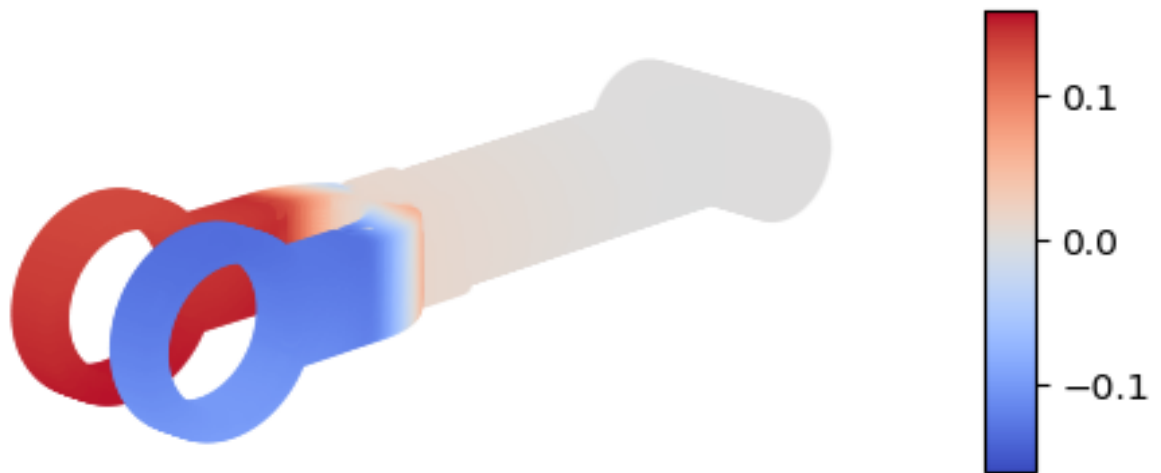
**Run Name: run0**

**Solution Output: out\_1\_39**

Field: u-y

min-u-y: -0.159597

max-u-y: 0.15956



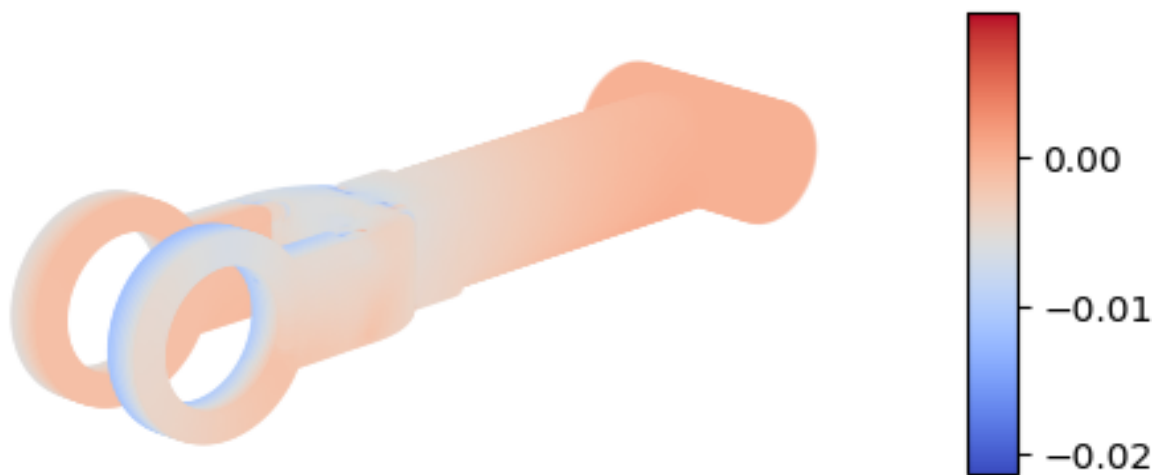
**Run Name: run0**

**Solution Output: out\_1\_39**

Field: u-z

min-u-z: -0.0212848

max-u-z: 0.00980508



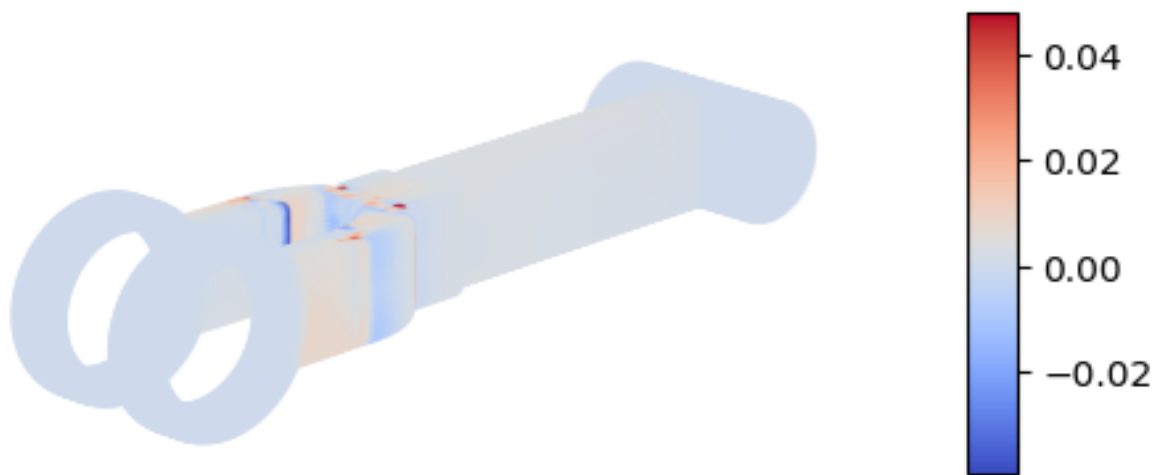
**Run Name: run0**

**Solution Output: out\_1\_39**

Field: e-x

min-e-x: -0.0390958

max-e-x: 0.0481164





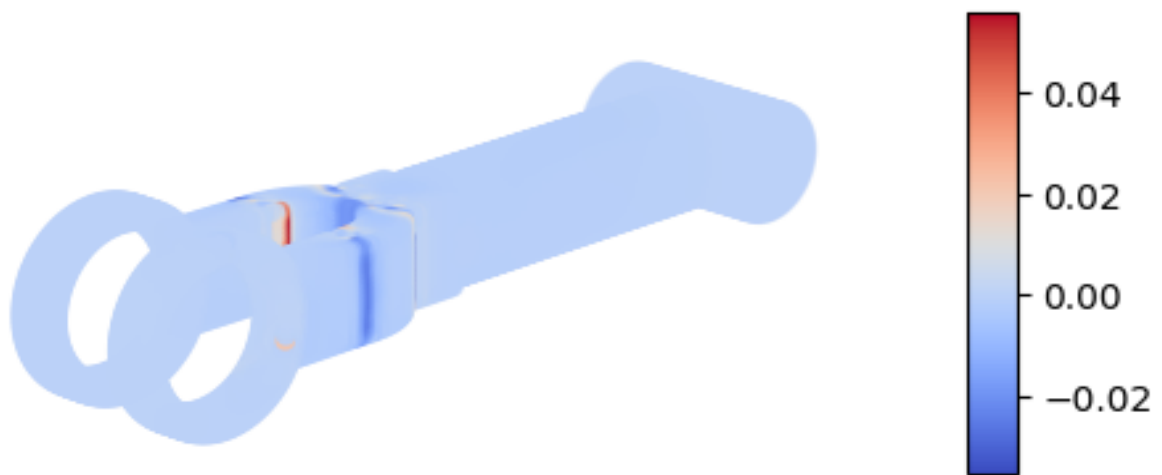
**Run Name: run0**

**Solution Output: out\_1\_39**

Field: e-y

min-e-y: -0.0350413

max-e-y: 0.055863



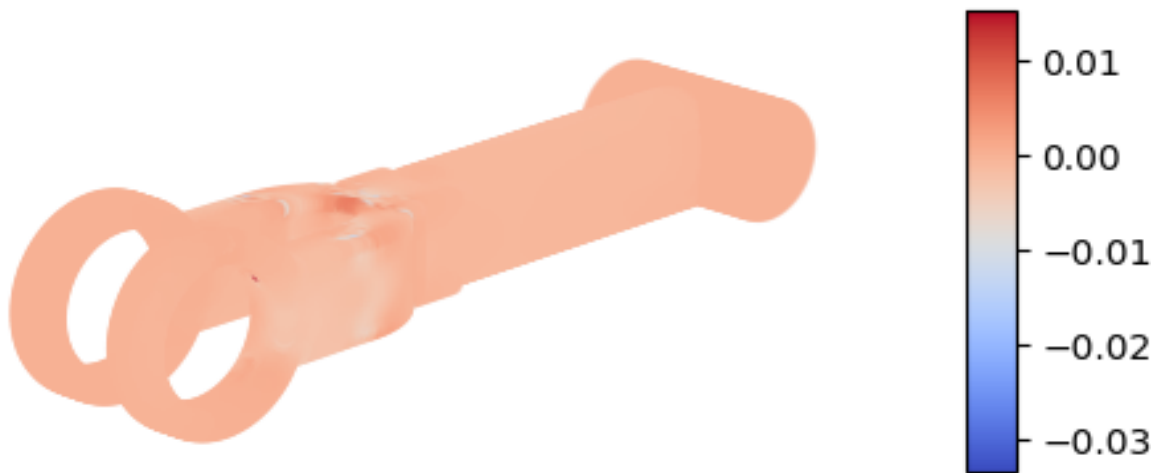
**Run Name: run0**

**Solution Output: out\_1\_39**

Field: e-z

min-e-z: -0.0333168

max-e-z: 0.0152375



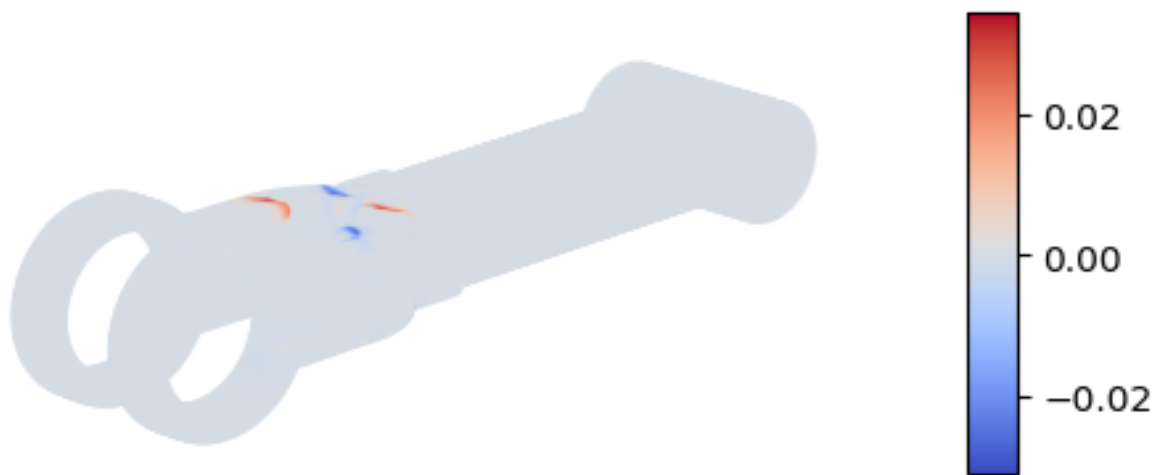
**Run Name: run0**

**Solution Output: out\_1\_39**

Field: e-xy

min-e-xy: -0.031023

max-e-xy: 0.034765



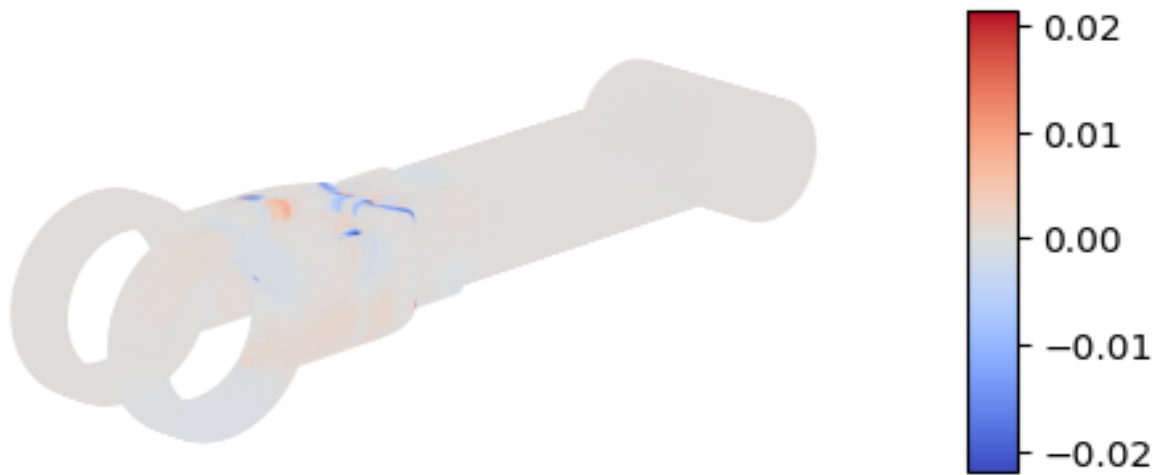
**Run Name: run0**

**Solution Output: out\_1\_39**

Field: e-yz

min-e-yz: -0.0217999

max-e-yz: 0.0213932



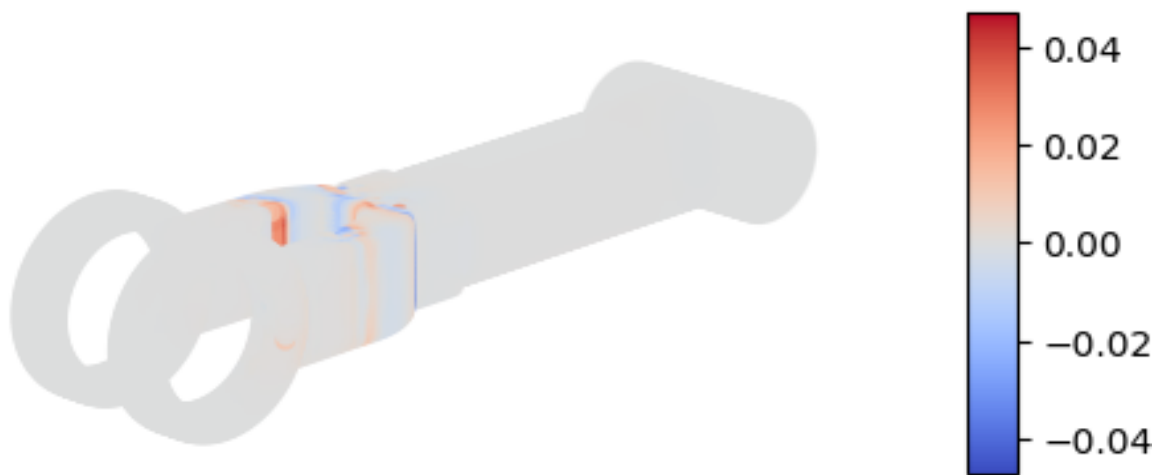
**Run Name: run0**

**Solution Output: out\_1\_39**

Field: e-zx

min-e-zx: -0.0471035

max-e-zx: 0.0472294



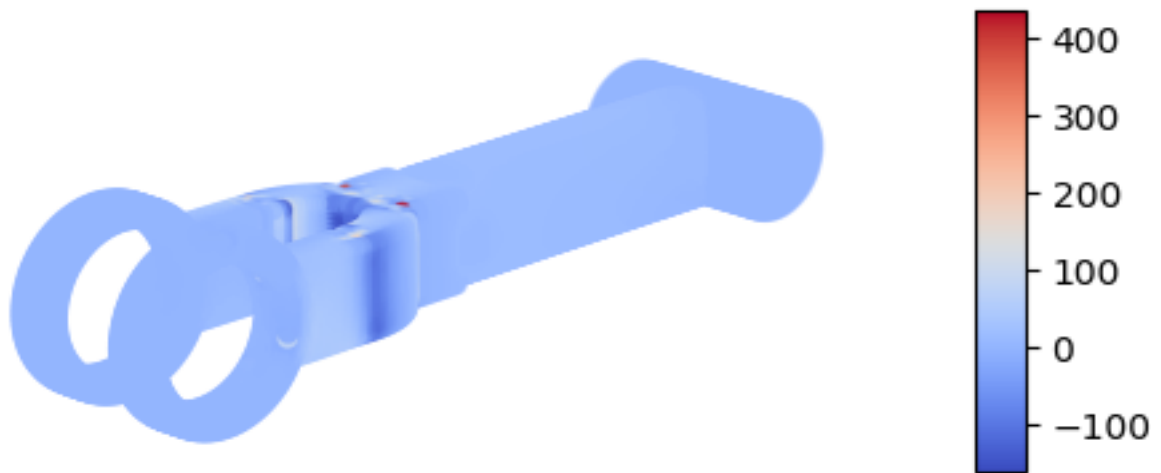
**Run Name: run0**

**Solution Output: out\_1\_39**

Field: s-x

min-s-x: -160.763

max-s-x: 437.53



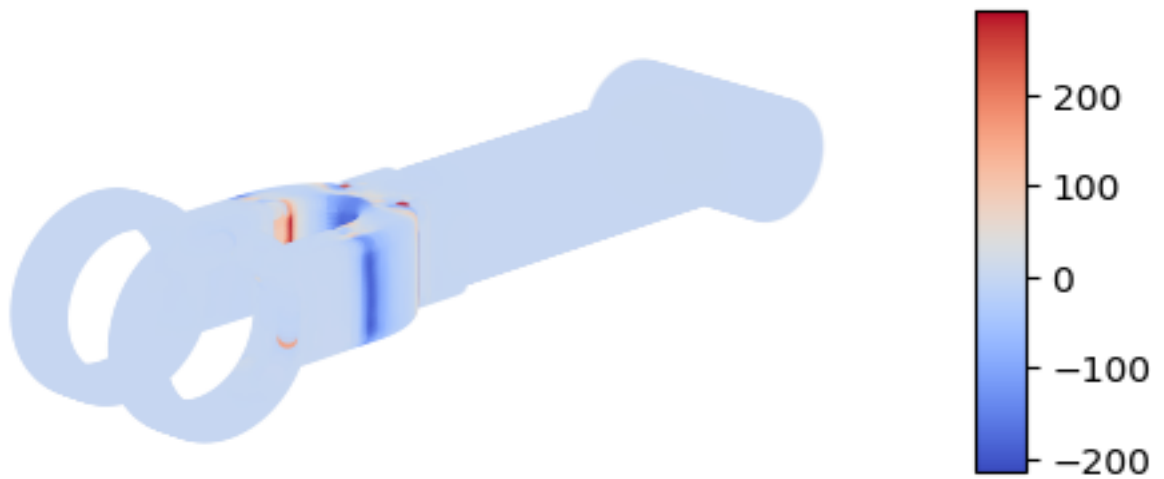
**Run Name: run0**

**Solution Output: out\_1\_39**

Field: s-y

min-s-y: -213.113

max-s-y: 293.343



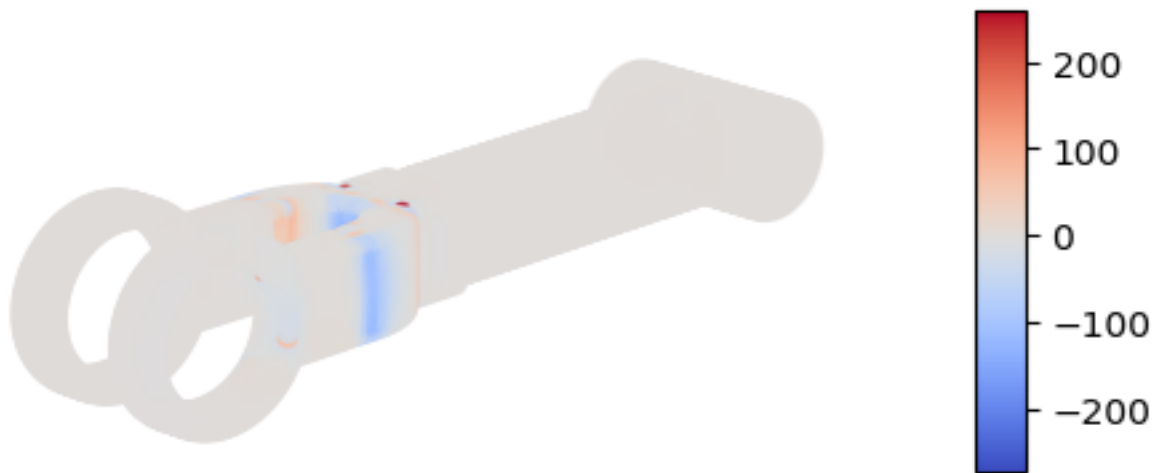
**Run Name: run0**

**Solution Output: out\_1\_39**

Field: s-z

min-s-z: -270.759

max-s-z: 259.742





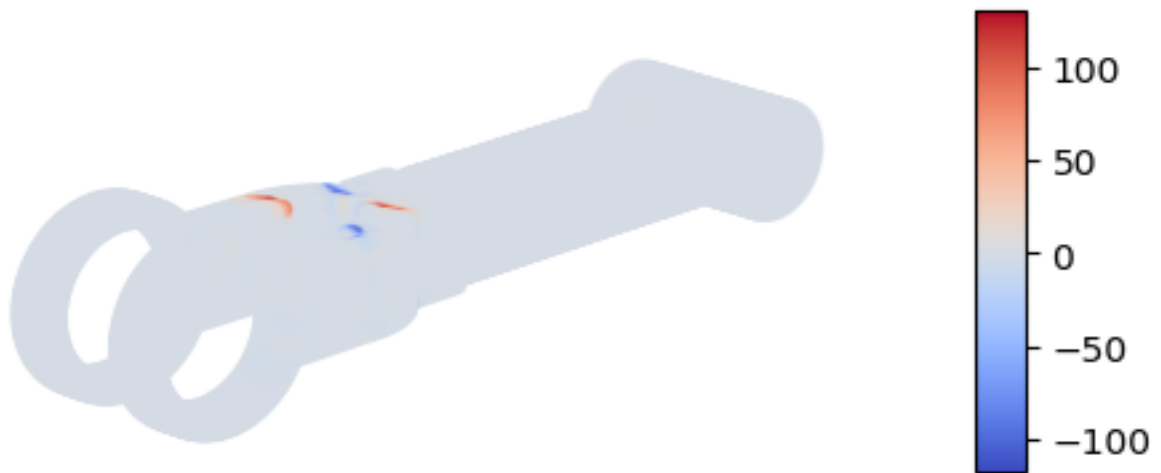
**Run Name: run0**

**Solution Output: out\_1\_39**

Field: s-xy

min-s-xy: -116.509

max-s-xy: 130.562



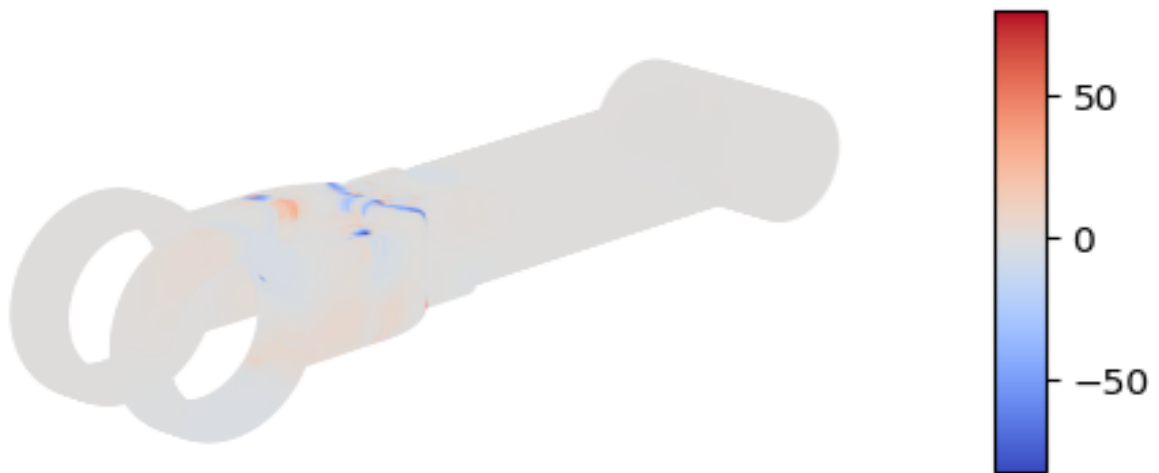
**Run Name: run0**

**Solution Output: out\_1\_39**

Field: s-yz

min-s-yz: -81.8707

max-s-yz: 80.3433



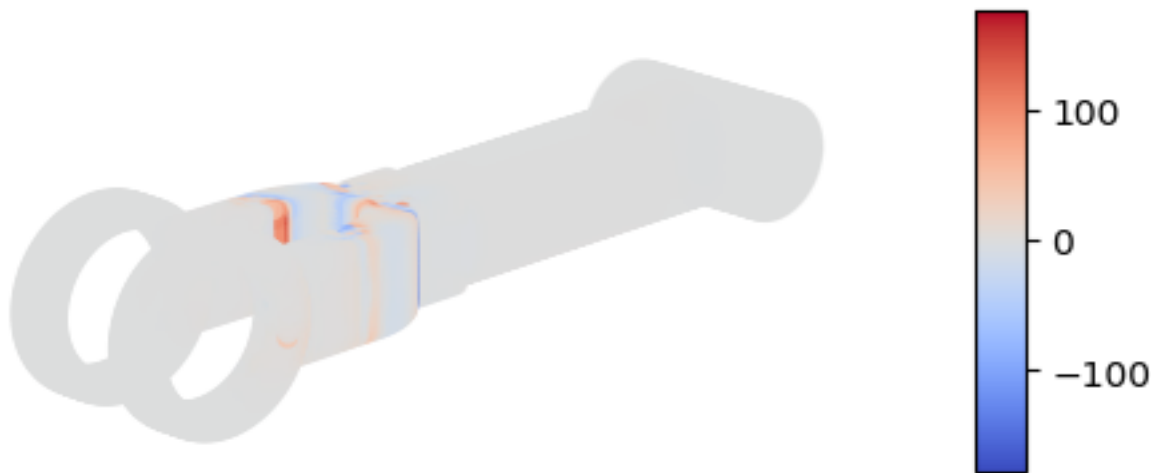
**Run Name: run0**

**Solution Output: out\_1\_39**

Field: s-zx

min-s-zx: -176.9

max-s-zx: 177.373



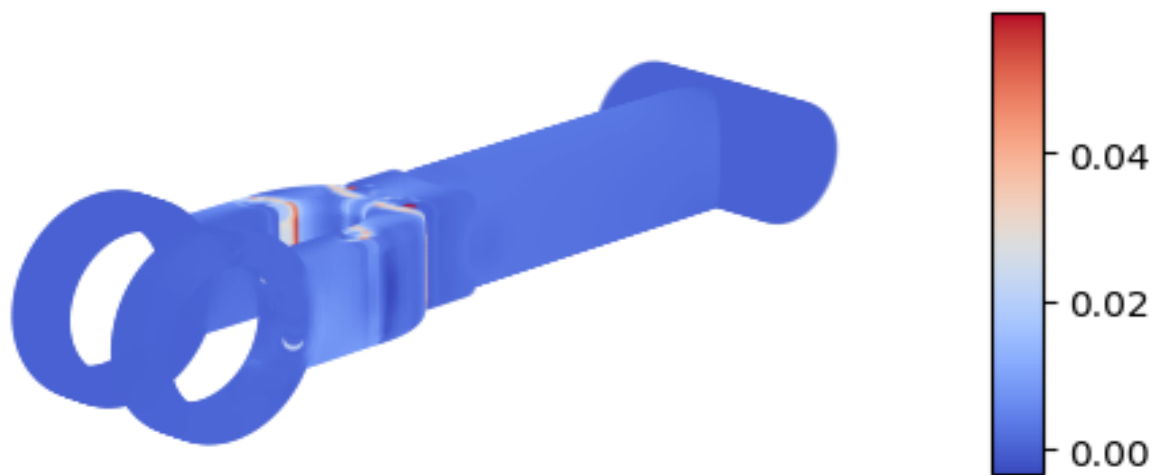
**Run Name: run0**

**Solution Output: out\_1\_39**

Field: e-p1

min-e-p1: -0.00307839

max-e-p1: 0.0590501



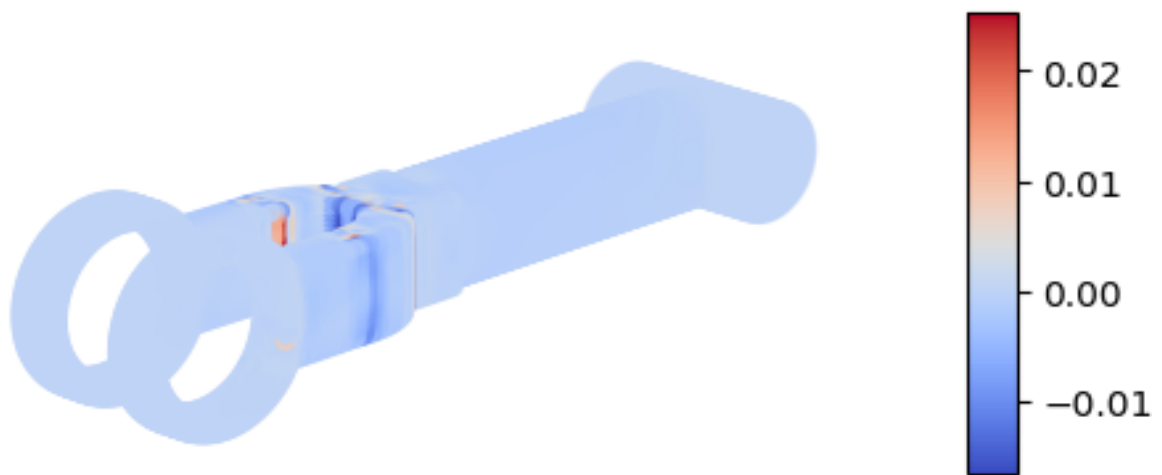
**Run Name: run0**

**Solution Output: out\_1\_39**

Field: e-p2

min-e-p2: -0.0165515

max-e-p2: 0.0253731



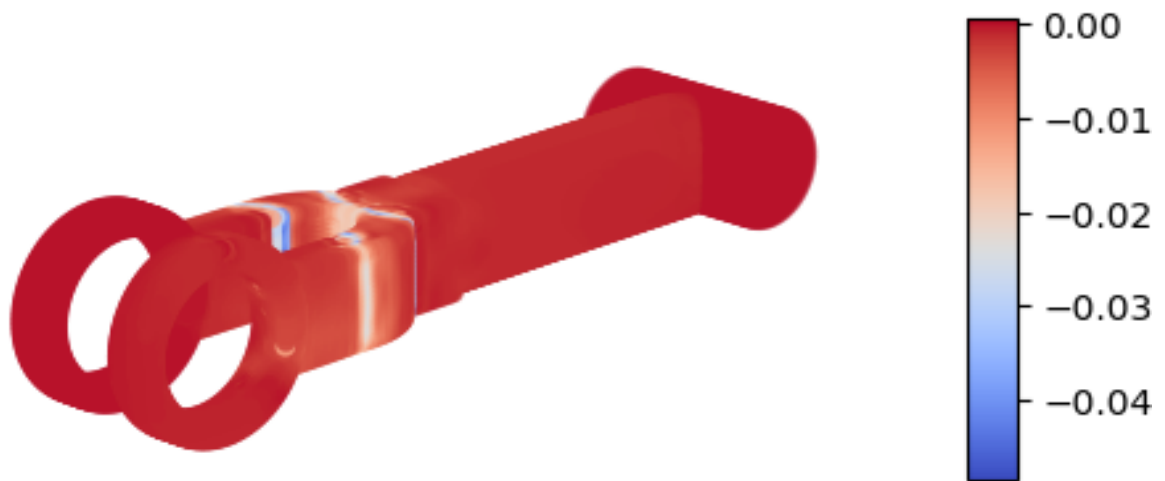
**Run Name: run0**

**Solution Output: out\_1\_39**

Field: e-p3

min-e-p3: -0.048493

max-e-p3: 0.000682918



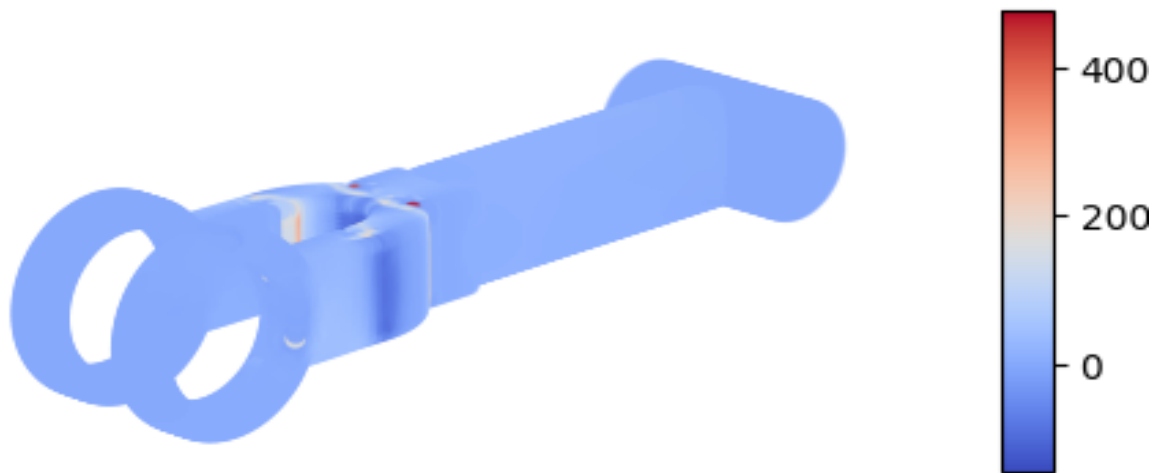
**Run Name: run0**

**Solution Output: out\_1\_39**

Field: s-p1

min-s-p1: -145.336

max-s-p1: 478.592



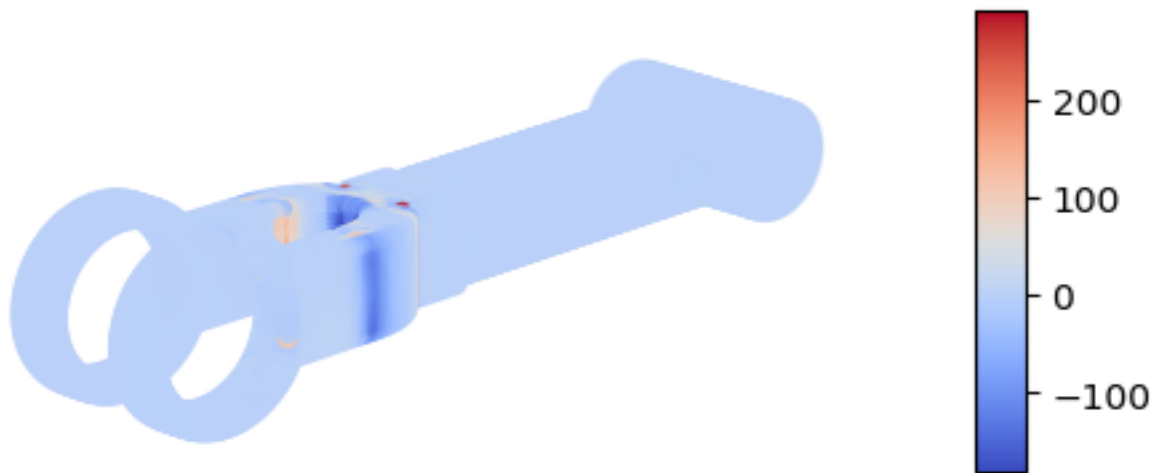
**Run Name: run0**

**Solution Output: out\_1\_39**

Field: s-p2

min-s-p2: -179.613

max-s-p2: 292.807





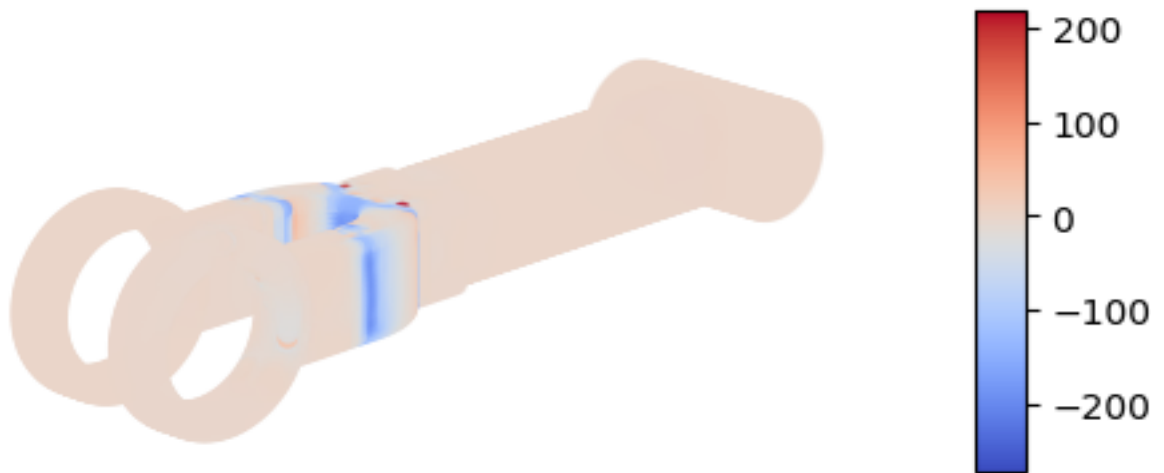
**Run Name: run0**

**Solution Output: out\_1\_39**

Field: s-p3

min-s-p3: -270.76

max-s-p3: 219.215



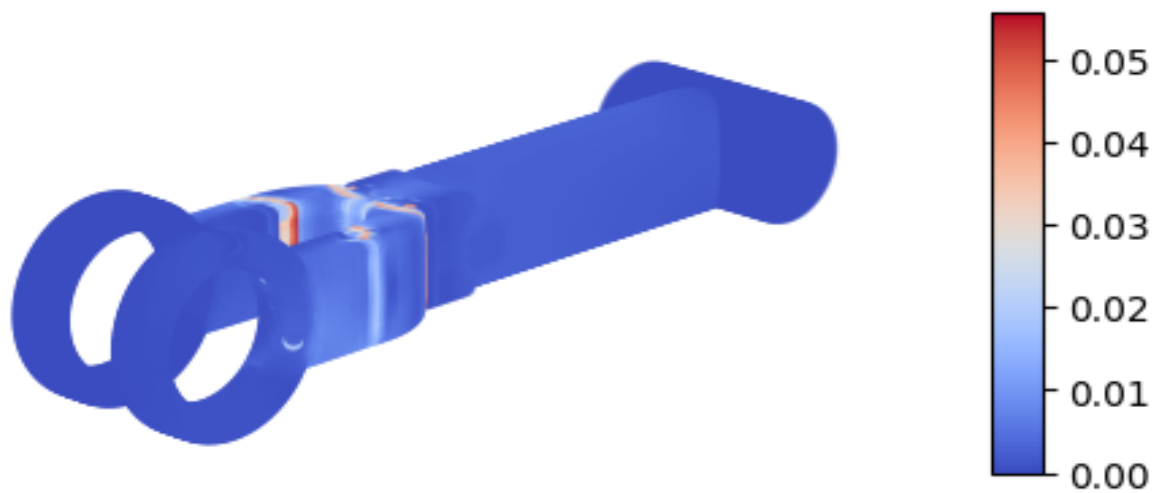
**Run Name: run0**

**Solution Output: out\_1\_39**

Field: e-eq

min-e-eq: 0.0

max-e-eq: 0.0557254



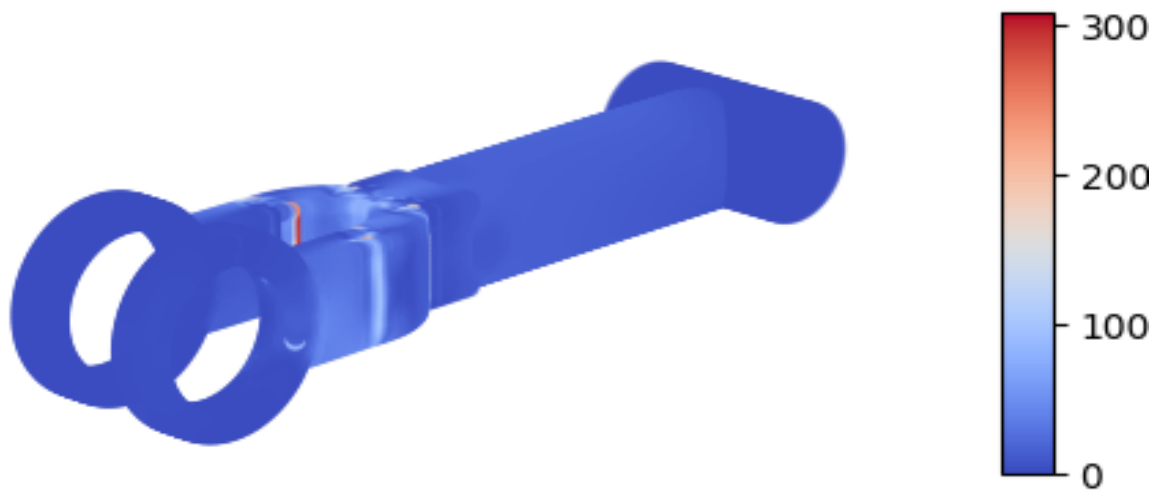
**Run Name: run0**

**Solution Output: out\_1\_39**

Field: s-eq

min-s-eq: 0.0

max-s-eq: 308.233



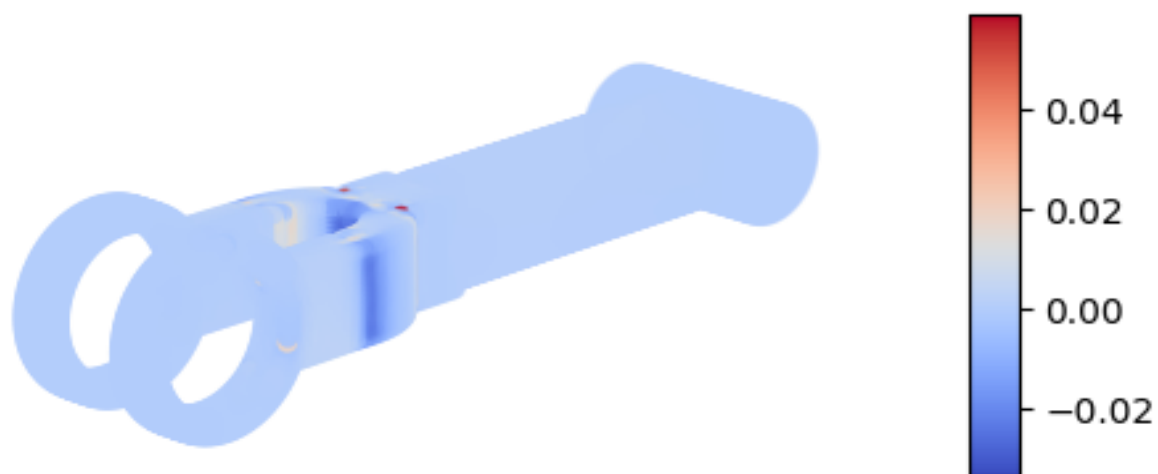
**Run Name: run0**

**Solution Output: out\_1\_39**

Field: e-vol

min-e-vol: -0.0332415

max-e-vol: 0.0591293



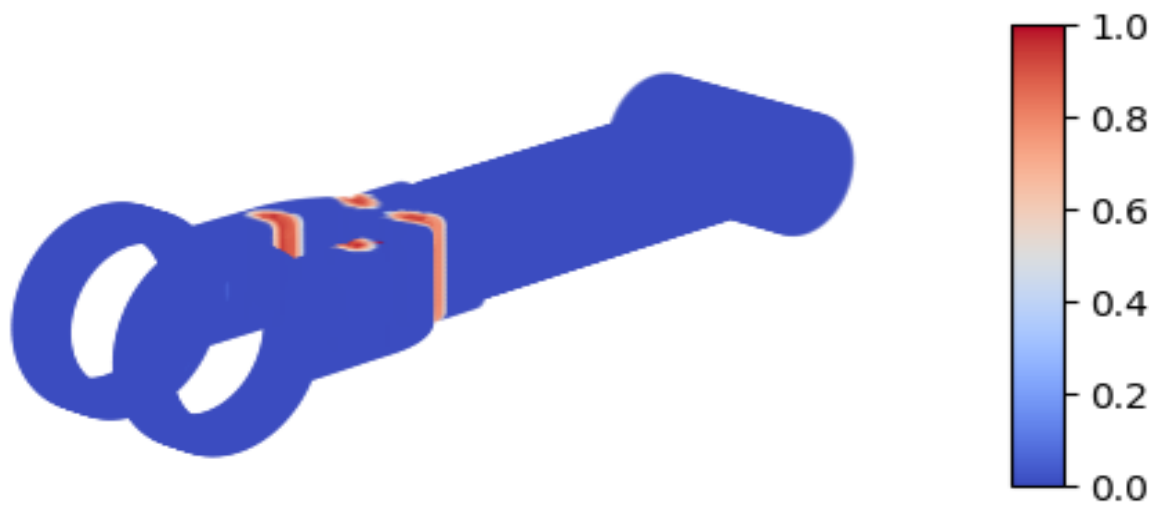
**Run Name: run0**

**Solution Output: out\_1\_39**

Field: damage-ini

min-damage-ini: 0.0

max-damage-ini: 1.0



**Run Name: run0**

**Solution Output: out\_1\_39**

Field: damage

min-damage: 0.0

max-damage: 1.0

